

## FLUID DYNAMICS OF STELLAR JETS IN REAL TIME: THIRD EPOCH *HUBBLE SPACE TELESCOPE* IMAGES OF HH 1, HH 34, AND HH 47

P. HARTIGAN<sup>1</sup>, A. FRANK<sup>2</sup>, J. M. FOSTER<sup>3</sup>, B. H. WILDE<sup>4</sup>, M. DOUGLAS<sup>4</sup>, P. A. ROSEN<sup>3</sup>, R. F. COKER<sup>4</sup>,  
B. E. BLUE<sup>5</sup>, AND J. F. HANSEN<sup>5</sup>

<sup>1</sup> Department of Physics and Astronomy, Rice University, 6100 S. Main, Houston, TX 77521-1892, USA

<sup>2</sup> Department of Physics and Astronomy, University of Rochester, Rochester, NY 14627-0171, USA

<sup>3</sup> AWE, Aldermaston, Reading Berkshire, RG7 4PR, UK

<sup>4</sup> Los Alamos National Laboratory, Los Alamos, NM 87545, USA

<sup>5</sup> General Atomics, 3550 General Atomics Court, San Diego, CA 92121-1122, USA

Received 2011 January 17; accepted 2011 April 18; published 2011 July 1

### ABSTRACT

We present new, third-epoch *Hubble Space Telescope*  $H\alpha$  and [S II] images of three Herbig–Haro (HH) jets (HH 1&2, HH 34, and HH 47) and compare the new images with those from previous epochs. The high spatial resolution, coupled with a time series whose cadence is of order both the hydrodynamic and radiative cooling timescales of the flow, allows us to follow the hydrodynamic/magnetohydrodynamic evolution of an astrophysical plasma system in which ionization and radiative cooling play significant roles. Cooling zones behind the shocks are resolved, so it is possible to identify which way material flows through a given shock wave. The images show that heterogeneity is paramount in these jets, with clumps dominating the morphologies of both bow shocks and their Mach disks. This clumpiness exists on scales smaller than the jet widths and determines the behavior of many of the features in the jets. Evidence also exists for considerable shear as jets interact with their surrounding molecular clouds, and in several cases we observe shock waves as they form and fade where material emerges from the source and as it proceeds along the beam of the jet. Fine structure within two extended bow shocks may result from Mach stems that form at the intersection points of oblique shocks within these clumpy objects. Taken together, these observations represent the most significant foray thus far into the time domain for stellar jets, and comprise one of the richest data sets in existence for comparing the behavior of a complex astrophysical plasma flow with numerical simulations and laboratory experiments.

**Key words:** Herbig–Haro objects – hydrodynamics – ISM: jets and outflows

*Online-only material:* color figures

### 1. INTRODUCTION

A variety of objects with accretion disks drive supersonic jets, including compact binaries, active galactic nuclei (AGNs), planetary nebulae, and young stars (Stirling et al. 2001; Schmidt 1997; Balick et al. 1998; Reipurth & Bally 2001). Young stars are particularly good places to study the dynamics of these outflows because the best images resolve the widths of jets, and because postshock gas cools by radiating emission lines, so images and spectra show where the gas is heated. The cavities, shells, and turbulence created by stellar jets as they inject kinetic energy and momentum into the surrounding medium are a major way that young stars generate feedback to their environments, so by observing how stellar jets interact with themselves and their surroundings we can identify the main fluid dynamical processes that operate in these systems. Such observations motivate and guide numerical simulations of stellar jets, and also provide some insight into how to interpret other astrophysical jets that are unresolved spatially.

The most simple and powerful way to study the dynamics within a complex system like a stellar jet is simply to watch how it varies with time. With most astrophysical nebulae this is not practical because the evolutionary timescales are too long and distances too great for multiple epochs of imaging to show substantial motions or structural changes in the emitting gas. A notable exception to this is the Crab Nebula, where “movies” at optical and X-ray wavelengths revealed a wealth of dynamical information about the jet and its surrounding synchrotron nebula (Hester et al. 2002).

Proper motions of Herbig–Haro (HH) objects (the brightest shocks within jets) were first observed decades ago from ground-based images (e.g., Cudworth & Herbig 1979; Herbig & Jones 1981). These observations show the shocked nature of the bipolar flows, but only the vastly superior spatial resolution provided by the *Hubble Space Telescope* (*HST*) makes it possible to clearly resolve cooling zones and individual shocks in each region. The nature of the line emission from these objects greatly assists in their interpretation. Because shocks in stellar jets typically move into gas that is mostly neutral, Balmer line emission occurs primarily in a thin shell excited by collisions at the shock front, followed by a cooling zone that is bright in forbidden lines of [S II], [O I], and [N II] (Heathcote et al. 1996). Cooling zones are often observed to be offset spatially from the shock front, so by combining narrowband  $H\alpha$  and [S II] emission-line images we can identify both the location of the shocks and the direction of the flow through the shock.

Papers based on images from two epochs of *HST* images exist for the bright, well-resolved jets and bow shocks in HH 1&2 (Bally et al. 2002), HH 34 (Reipurth et al. 2002), and HH 47 (Hartigan et al. 2005). These works focused on measuring precise bulk velocities throughout these regions, and the observations were ideal for this purpose because the two epochs in each case were separated by  $\sim 4$  years, long enough for the emission-line objects to show well-defined proper motions yet short enough to ensure that structural variations remain negligible within most knots. In the decade that passed since the second-epoch observations of these regions, most features in the emission-line images exhibit morphological changes that

**Table 1**  
Observing Log of *HST* Images

Object	UT Date	Filter	Exposure Time (ks)	<i>HST</i> Program
HH 1&2	1994.61	656N	3.0	GO-5114
		673N	3.0	
	1997.58	656N	2.0	GO-6794
		673N	2.2	
	2007.63	656N	2.0	GO-11179
		673N	1.8	
HH 34	1994.71	656N	3.0	GO-5114
		673N	3.0	
	1998.71	656N	13.4	GO-6794
		673N	13.4	
	2007.83	656N	9.6	GO-11179
		673N	9.6	
HH 47	1994.24	656N	11.9	GO-5504
		673N	11.9	
	1999.16	656N	4.1	GO-6794
		673N	4.1	
	2008.00	656N	7.5	GO-11179
		673N	7.5	

range from dramatic to subtle. These variations hold the key to understanding ongoing dynamical processes by providing the first venture into the time domain of jets from young stars.

In what follows we describe new *HST* images of HH 1&2, HH 34, and HH 47 in  $H\alpha$  and  $[S\ II]$  (Section 2) with an emphasis on quantifying the most obvious dynamical changes (Section 3). We group the various dynamical phenomena we observe into five categories of common physical processes (Section 4), and end with a summary (Section 5). While analyzing these data we found that the complex morphological changes we observe are often easiest to visualize by examining “movies” interpolated from the three epochs in a uniform manner, with the caveat that any behavior inferred from the movies must be confirmed by examining the individual images in each filter. Examples of these movies are available on the Web and these are a helpful supplement to the figures in this paper.

## 2. DATA ACQUISITION AND REDUCTION

We obtained a third epoch of  $H\alpha$  (656N) and  $[S\ II]$  (673N) images of HH 1&2, HH 34, and HH 47 with WFPC2 as part of *HST* program GO-11179. Table 1 summarizes the current and previous two epochs of these three jets taken with the same filters on WFPC2 over a span of 14 years as parts of three GO programs. The data acquisition strategy differed between the programs, with some opting for a fewer, longer exposures to minimize readout noise, while others choosing to obtain many shorter exposures to facilitate the removal of cosmic rays and bad pixels. In addition, some of the programs dithered by fractional pixels between exposures to improve the spatial resolution while others did not. The fields of view also varied, depending on the pointing constraints for the telescope at the epoch of the observations, a desire to image different parts of the regions, or the need to avoid a particular WF chip that had subpar dark current or cosmetic defects.

In our current program, for HH 1&2 we dithered each set of exposures between two positions separated by 2.5 WF pixels, using a total of two exposures per dither point in each filter. Similarly, for HH 34 we used an analogous four-point dither pattern with two exposures in each filter, and for HH 47 a three-point dither pattern with two exposures in each filter. The observations were obtained when *HST* was operating on only

two gyros, and as a result the optimal orientations for each region were not always available. This constraint was most problematic for HH 1&2 because the available orientations left almost no room to fit both HH 1 and HH 2 on the CCDs in a single exposure. We were able to fit the brightest portion of HH 1, and all of HH 2 onto the CCDs with clearances of about 0.5 and 2.0 arcsec, respectively. However, the leading edge of the faint  $H\alpha$ -bright bow shock labeled “B” by Bally et al. (2002) fell just off the edge of the chip. While this object is probably more interesting dynamically than the knots in HH 2L located near the bottom edge of the field, HH 2L proved to be an important check of the procedure used to align and combine the individual chips into the final composite image, because the HH 2 field has no stars useful for alignment in its vicinity. The image of HH 47 was shifted with respect to previous epochs in order to capture the redshifted counterjet for future proper motion studies, at the expense of not imaging the faint extended bow shock HH 47D.

The optimal procedure for reducing WFPC2 images has evolved over the years since *HST* was launched. More is known now about distortion corrections than in the past, and better routines are available to correct for cosmic rays and bad pixels. While reduced and aligned images of these regions exist as part of the previous programs, to facilitate comparing the old images with the new ones we decided to reanalyze all of the previous images so as to reduce all the data in the same manner.

A typical exposure time was over 1000 s for each frame, so the images contain many cosmic rays. In addition, with only a handful of images available for each region, standard procedures for removing cosmic rays are limited. In each region, we began by removing cosmic rays from the dark-corrected, flattened images with the Laplacian-based routine `la_cosmic` (van Dokkum 2001). After performing this procedure for each of the four chips in each exposure, we blinked the cleaned and unclean images, paying special attention to any area that had extended emission to ensure that the routine did not remove any real features. Roughly 90% of the cosmic rays were removed with this procedure. We then employed the STSDAS/IRAF routine `crrej` as the next stage for cosmic-ray correction, reviewing each frame interactively as we did for `la_cosmic`.

Images recorded on the four WFPC2 chips need to be corrected for chip-to-chip rotations and distortions, which are time-dependent. To accomplish this we used a program devised by J. Anderson at STScI where the corrections are based in part on astrometric observations of  $\omega$  Cen (Anderson & King 2003). The dithered images were shifted, corrected for differing zero-point levels, and combined so that the final composites have a plate scale of 0.05 arcsec per pixel. Typical positional scatter between different epoch images of the same star are  $\sim 0.01$ – $0.02$  arcsec. For HH 2 we rely completely on the distortion corrections because no stars are present to check the alignment. One check on the alignment is to follow the position of the knots associated with HH 2L, which is sensitive to rotational offsets because it has a low proper motion and is located at the edge of the frame. Proper motions measured from the new images used the code described in Hartigan et al. (2001).

Ratios of emission-line images can provide important information about physical conditions in extended nebulae. For HH nebulae there are no significant contaminant lines within the 656N and 673N bandpasses, so the counts recorded in these images are proportional to the fluxes in  $H\alpha$  and  $[S\ II]$  6716+6731, respectively. The proportionality constant between the count rate and the flux depends on the level of continuum light present, and

on the filter transmission curves (O'Dell & Doi 1999). Based on spectroscopic data of nebulae imaged through these filters, O'Dell (2009) determined that the effective transmission coefficient for the 673N filter was a factor of 1.14 higher than that of the 656N filter. We have applied this correction to our emission-line ratio images, but it is of little consequence because the variations in the line ratios are typically a factor of two or larger.

Contaminating continuum light is potentially more problematic because the bandpass of the 673N filter is a factor of 2.14 larger than that of 656N. However, aside from the well-known reflected light cavities around the sources of HH 34 and HH 47, the only source of continuum in our objects is the two-photon continuum which is very weak at these wavelengths. For example, using the measurements of Hartigan et al. (1999) for HH 47A, taking into account the larger bandpass of 673N relative to 656N, the continuum alters the observed emission-line ratio derived from the images by less than 0.4%, and can be ignored. Because the wavelengths of the H $\alpha$  and [S II] lines are similar, differential reddening is also negligible.

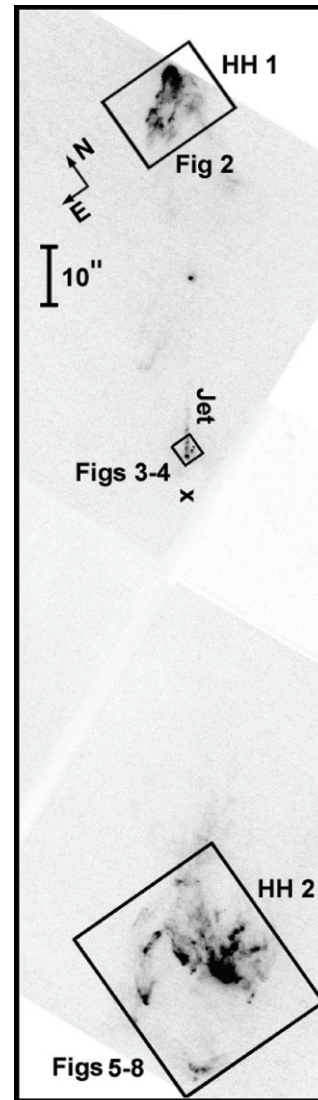
### 3. RESULTS

When combined with the previous two epochs, the new *HST* images make an ideal data set to study fluid dynamical processes in stellar jets and working surfaces. Proper motions were already measured with high precision from translational motions between the first and second epochs in three published papers (Bally et al. 2002; Reipurth et al. 2002; Hartigan et al. 2005). The first two epochs are best suited for measuring proper motions because the time interval between epochs is long enough for the objects to show significant movement, but short enough that the morphology of individual features typically remains constant. The main power of the third epoch is to separate dynamical changes from bulk motion everywhere within each system. In what follows we focus on these structural changes, but also report proper motion measurements for new knots where appropriate. When interpreting these images it is important to keep in mind that the emission is optically thin, so we observe all the radiation along a particular line of sight.

#### 3.1. HH 1 and HH 2

HH 1 and HH 2 are two of the brightest HH objects in the sky, and were among the first to be studied for proper motions. Using images that date back to 1946, Herbig & Jones (1981) found large proper motions of 200–350 km s<sup>-1</sup> directed to the northwest for HH 1 and to the southeast for HH 2. These observations demonstrated that HH objects are manifestations of collimated bipolar outflows (with the new, smaller distance to Orion of 414 pc from Menten et al. 2007, velocities derived from these studies will be reduced by  $\sim 10\%$ ). The driving source of the HH objects appears to be a highly obscured source known as VLA 1, visible only in radio continuum (Pravdo et al. 1985). Radial velocities are low, indicating the flow lies nearly in the plane of the sky, and large emission-line widths within the bright knots provided some of the first concrete evidence for bow shocks (Hartmann & Raymond 1984; Hartigan et al. 1987). Herbig & Jones (1981) noted that time-dependent variations occurred, including the emergence of a bright new knot in HH 2 (see also Eisloffel et al. 1994b), but it was not until *HST* was launched that it became possible to resolve and follow individual shock waves and knots well within this region.

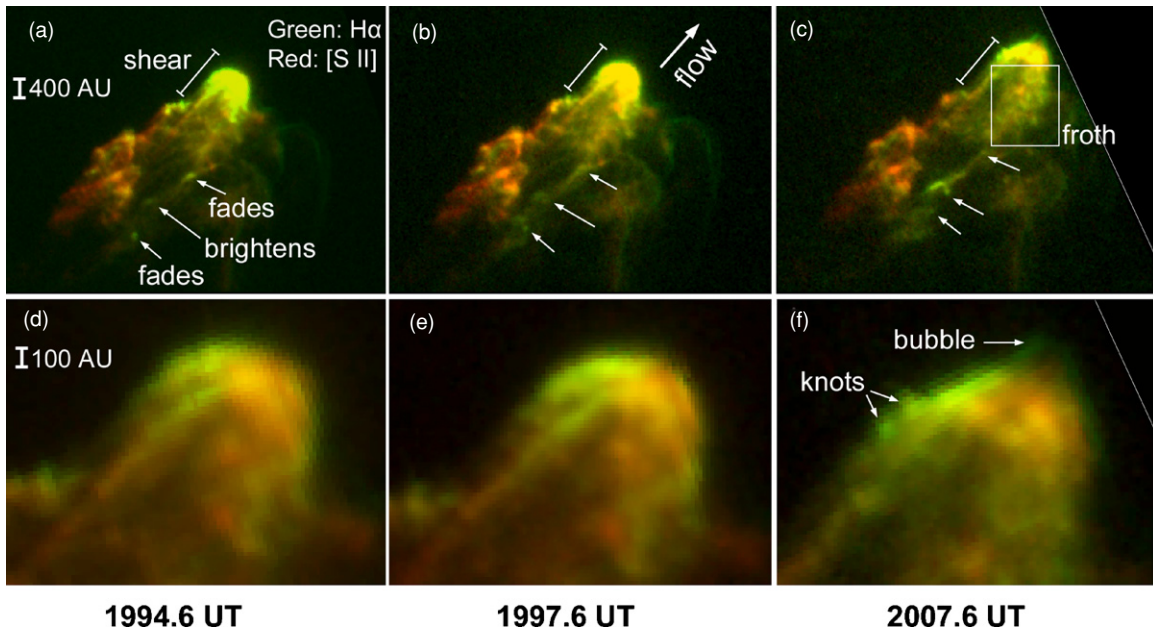
Bally et al. (2002) combined first-epoch *HST* images from 1994 (Hester et al. 1998) with a second epoch from 1997 to



**Figure 1.** Combined [S II] 673N + H $\alpha$  656N *HST* image HH 1 and HH 2 for the third epoch. Up corresponds to a position angle of 325 deg. The main features are marked, as are the regions magnified in subsequent figures. The embedded source that drives the system is marked with a “x” (Chini et al. 2001).

measure the proper motions of over 150 individual objects within HH 1, HH 2, and the jets in the system. In HH 1, proper motions revealed what appeared to be shear, with the apex of the brightest bow shock apparently pulling away from material along its eastern edge. The images clearly resolved the cooling zone structure of the bow shock, with H $\alpha$  emission located near the shock fronts followed by [S II] emission. Bally et al. (2002) comment that HH 1 appears to be displaced east of the axis of the jet, and that is the side of the flow where the wing of the bow shock exhibits shear. The enhanced emission along that wing of the bow shock can be caused by an increase in the preshock density toward the east (Henney 1996), an effect that would also distort the shape of the bow shock relative to its direction of motion like that observed in HH 1. However, the multiple bow shocks and the offset of the jet’s axis from the brightest bow in this object must arise from other causes, such as precession or velocity variability in the flow.

Two jets are visible near the driving source, VLA 1. The HH 1 jet becomes visible at optical wavelengths  $\sim 6$  arcsec from VLA 1 (Pravdo et al. 1985; Reipurth et al. 1993; Figure 1), though the jet can be traced closer to its source at infrared



**Figure 2.** Three epochs of *HST* images of HH 1. The  $H\alpha$  image is green, the  $[S II]$  image is red, and yellow denotes emission in both filters. The scale bar assumes a distance of 414 pc. North is up and east is to the left. The top three frames are aligned spatially, and show that the system moves to the upper right (northwest). The angled scale bar has a fixed length, and demonstrates that the leading bow shock pulls away from material on its left shoulder. Several knots along the jet’s axis marked with arrows brighten and fade, mostly in  $H\alpha$ . Changes in the structure of the bow shock in the third epoch, and the complex structure in the region denoted “froth” are discussed in the text. The narrow angled white line at the upper right corner of frames (c) and (f) mark the edge of the CCD. The direction of the flow in this, and subsequent figures, is shown with an arrow.

(A color version of this figure is available in the online journal.)

wavelengths (Reipurth et al. 2000a; Garcia Lopez et al. 2008). In their first-epoch images, Hester et al. (1998) discovered that a smaller and fainter second jet, HH 501, emerges from nearly the same location as HH 1 does but at an angle of about 10 deg clockwise from the main jet. Bally et al. (2002) found no evidence for any interaction between the two jets, and concluded based on proper motions that both originate near VLA 1, which itself may be a multiple source. Radial velocities of the  $H_2$  emission show both a redshifted and a blueshifted component within a few arcseconds of VLA 1, suggestive of two sources (Garcia Lopez et al. 2008), although interpretation of these observations is made more difficult by the orientation of the flow near to the plane of the sky. Images from the first two epochs show the HH 1 jet to be bright in  $[S II]$  and much weaker in  $H\alpha$ , typical for stellar jets (Reipurth et al. 2000a).

HH 2 is one of the most fragmented shocked flows known, with *HST* images showing dozens of overlapping clumps and complex morphologies to the line emission (Hester et al. 1998). Proper motions derived from the first two *HST* epochs provided intriguing evidence for both forward and reverse bow shocks, time variability, and differential motions (Bally et al. 2002). The morphology in HH 2 differs markedly from that of HH 1, but the highest proper motions in HH 2 lie along an axis that passes through HH 1 and VLA 1.

### 3.1.1. The HH 1 Bow Shock

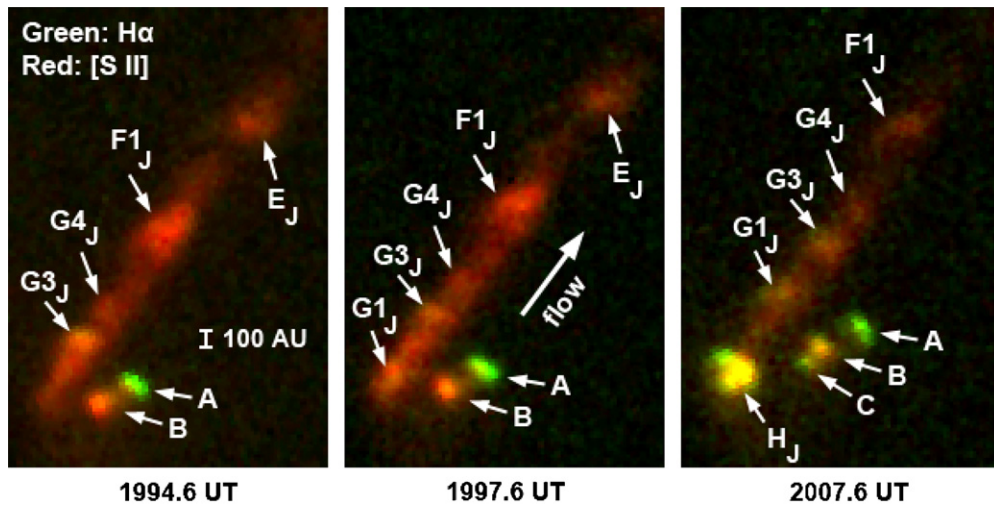
Our third-epoch images of HH 1 and HH 2 provide a definitive test of the conclusions of Bally et al. (2002), and also reveal new phenomena. Figure 2 summarizes the primary dynamical behavior in the bow shock of HH 1. The leading edge of the bow shock is green ( $H\alpha$ ), and is followed by red ( $[S II]$ ) or yellow (both  $H\alpha$  and  $[S II]$ ) in the cooling zone, consistent with the expected structure of a spatially resolved shock. The angled scale bar labeled “Shear” in the figure is of fixed length, with

its base located at the intersection point between the left wing of the bow shock and the clumpy material to the side for each of the images. In 1994 (panel a), the bow shock is smaller than the scale bar, but increases in size by 1997 to the length of the bar (panel b), and becomes significantly larger than the bar in 2007 (panel c). Hence, the third-epoch image confirms that the bow shock pulls ahead of the material in its eastern wake, and thereby creates a region of large shear.

The third epoch resolves remarkable new structures in the HH 1 bow shock, as shown in panels (d), (e), and (f) in Figure 2. In the latest epoch, the left-hand side of the bow shock has changed from its usual curved shape into a nearly flat surface, and a new “bubble” has emerged right at the apex. Trailing the flat edge of the bow shock on the left-hand side, we find two small knots that have appeared in the third epoch. These new features are more prominent in  $H\alpha$  than they are in  $[S II]$ . We discuss these developments in the context of deflection shocks in Section 4.1.

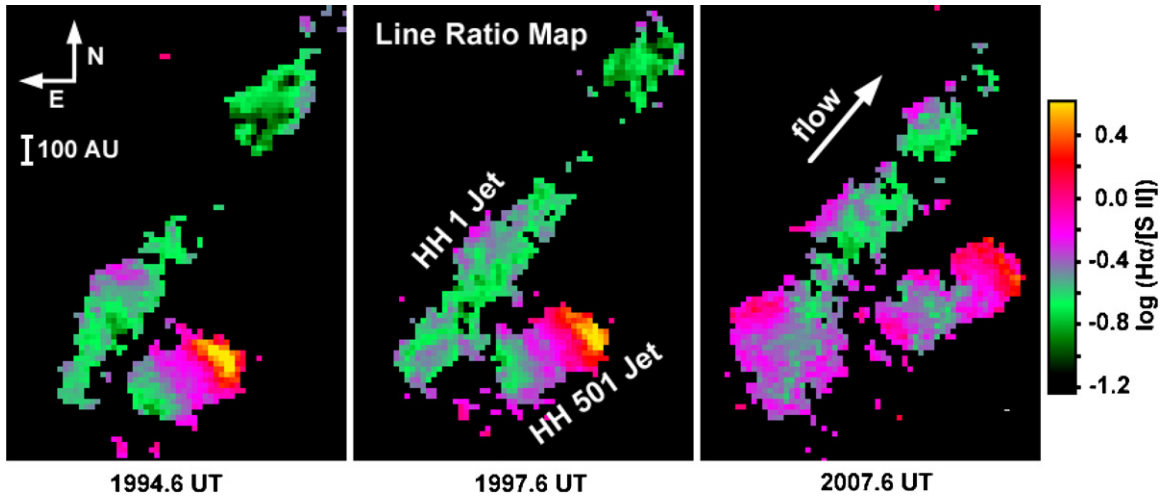
Figure 2 shows three features that varied significantly in brightness, especially in  $H\alpha$ , over the time period of the observations. All are located along the axis of the fast part of the flow. The top and bottom of the three, named “29” and “L,” respectively, by Bally et al. (2002) and noted as variable in that paper, continued to fade in brightness into the third epoch and have nearly disappeared while becoming more diffuse. A new, arc-shaped  $H\alpha$  feature has now formed between the two fading knots at the position of an ill-defined faint knot present in the first two epochs. These features likely arise from small fast clumps in the jet that overtake slower material and produce transient shocks (Section 4.5).

The right-hand side of the bright bow shock has also developed intriguing new structures in the third epoch. That area, labeled “froth” in panel (f), appeared clumpy in the first two epochs, but the third epoch exhibits even more fine structure,



**Figure 3.** Same as Figure 1 but for the jets in HH 1. North is up and east is to the left. The nomenclature follows that of Bally et al. (2002). Knots with a subscript J are part of the HH 1 jet, and knots without subscripts belong to the HH 501 jet. Knot H<sub>J</sub> in HH 1 and knot C in HH 501 have emerged since the second epoch. The image for the third epoch is scaled differently from the first two in order to show the structure within knot H<sub>J</sub>.

(A color version of this figure is available in the online journal.)



**Figure 4.** Spatial map of line ratios in the HH 1 and HH 501 jets (cf. Figure 3), for all pixels having at least five ADU above background. The ratio derives from counts above background in the 656N and 673N filters, corrected for the filter responses.

(A color version of this figure is available in the online journal.)

particularly in H $\alpha$  where several sharp arcs have appeared. Some of these arcs are reverse facing, as if this wing of the bow shock is overtaking small slower-moving clumps in its path. One can also imagine the structure in the froth as arising from irregularities in the shape of the wing of the bow shock as it sweeps up material.

### 3.1.2. The HH 1 Jet

Between 1997 and 2007 a very bright new feature, labeled H<sub>J</sub> in Figure 3, emerged at the base of the optical part of the HH 1 jet. This knot is likely to be the same as the [Fe II] knot H of Reipurth et al. (2000a). In their observations from 1998.15 UT, this knot was 4.8 arcsec from the VLA source. It is currently located 6.9 arcsec from VLA 1, and so would need a proper motion of 0.22 arcsec per year to be the same knot. For a distance of 414 pc, this would imply a velocity of  $432 \pm 20$  km s<sup>-1</sup>, as compared with velocities of  $265 \pm 10$  km s<sup>-1</sup> typical for the other HH 1 jet knots (Bally et al. 2002, correcting the 460 pc distance assumed in that paper to 414 pc). Taken at face value these numbers imply that knot H<sub>J</sub> has a shock velocity of  $\sim 170$  km s<sup>-1</sup>, which is a

very strong shock for a jet knot. However, the relative velocity between this knot and the material ahead of it will gradually decline as the system evolves, on a timescale comparable to the time required for the knot to sweep up its mass. The line ratio map in Figure 4 shows that knot H<sub>J</sub> has a higher H $\alpha$ /[S II] ratio than that of the rest of the HH 1 jet.

VLA 1 continues to launch knots into the HH 1 jet, and with the aid of the proper motions measured above we can estimate when they should appear in the optical. Rodriguez et al. (2000) cite evidence for an ejection in the radio continuum between 1986.2 and 1992.9 UT. If one were to identify this event with the bright Fe II knots labeled K and L by Reipurth et al. (2000a), then the proper motion would be 0.22–0.50 arcsec per year, consistent with that of knot H<sub>J</sub>. Taking the proper motions to be the same as we infer for knot H<sub>J</sub>, we predict knots K and L of Reipurth et al. (2000a) should make their presence known in the optical between 2013 and 2018 as they emerge from the dusty envelope 6–7 arcsec from VLA 1. These two knots are both brighter than knot H in [Fe II], and could be quite impressive when they appear.

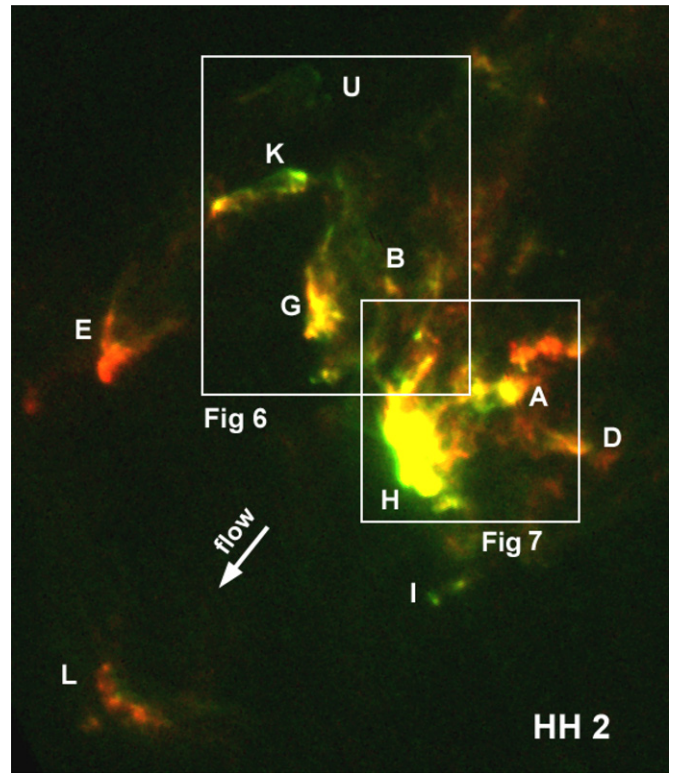
Feature H<sub>j</sub> has substructure consisting of three smaller knots. The knot closest to the source lies along the axis of the jet and is bright in both H $\alpha$  and in [S II]. Roughly 100 AU further along in the jet we find the other two components, one located on either side of the axis of the flow. The lateral edges of these two knots, but especially the one to the left, are relatively much brighter in H $\alpha$  (green in Figure 3, reddish-purple in the ratio map of Figure 4). These locations likely denote locations where the jet encounters and accelerates slower material at its periphery (Section 4.1). There is also some evidence from the ratio map that other knots in the HH 1 jet have enhanced H $\alpha$  emission of the left-hand side.

Bally et al. (2002) remarked that except for features which emerge from the source (e.g., G1<sub>j</sub> in 1997), other knots in the jet (E<sub>j</sub>, F1<sub>j</sub>, G3<sub>j</sub>) faded between 1994 and 1997, and these trends generally continue into the third epoch. Using apertures between 3 and 7 pixels for the [S II] images we find that knots E<sub>j</sub>, F1<sub>j</sub>, and G3<sub>j</sub> faded by  $\sim 15\%$ ,  $15\%$ , and  $30\%$ , respectively between epochs 1 and 2. In epoch 3, knot E<sub>j</sub> faded by an additional 60%, and now has an indistinct form with a surface brightness only roughly equal to that of the background. Knot F1<sub>j</sub> is also now  $\sim 40\%$  fainter than it was in epoch 2. However, knot G3<sub>j</sub> recovered about 20% of its brightness and is now only slightly fainter than it was in the first epoch. This knot has also expanded, and has begun to develop a distinct bow shock shape. It retains H $\alpha$  emission in its bow, an indication that the shock wave is currently active. Knot G4 did not change brightness significantly in the new images. Based on these numbers, a good order of magnitude estimate for the time required for [S II] knots to fade by a factor of two appears to be about 10 years when the knots no longer have active shocks that supply a significant amount of hot gas to their cooling zones.

### 3.1.3. The HH 501 Jet

Previous observations showed that HH 501 consists of two knots, denoted as A and B by Bally et al. (2002). The leading knot, A, is very bright in H $\alpha$ , with  $H\alpha/[S II] \sim 4$  in the first two epochs (Reipurth et al. 2000a; Figures 3 and 4). Although these knots are aligned with an embedded object known as the X-nebula, the proper motions indicated that the driving source was closer to VLA 1, and may arise from a companion to that object. Our new images show that a third knot, labeled “C” in Figure 3, has appeared in the wake of HH 501B. Knot A continues to be bright in H $\alpha$ , though the flux ratio with the [S II] lines is now closer to unity (Figure 4). Knot A has also developed a curved shape to its western side.

Our third epoch provides a much larger time interval over which to measure proper motions, but the downside is that morphological changes like we observe in knot A are more common, and these influence proper motion measurements. Morphological changes are less marked in [S II], so we used these images and the method described by Hartigan et al. (2001) to redetermine proper motions between 1994.6 UT and 2007.6 UT for HH 501A, HH 501B, and knot G3<sub>j</sub> in the HH 1 jet. Proper motions for knots A, B, and G3<sub>j</sub> between 1994.6 and 2007.6 were, respectively,  $191 \text{ km s}^{-1}$ ,  $165 \text{ km s}^{-1}$ , and  $284 \text{ km s}^{-1}$ , at  $316.0^\circ$ ,  $319.0^\circ$ , and  $323.0^\circ$ . Within the uncertainties introduced by morphological changes,  $\sim 10\%$ , these results agree with those from the first two epochs of Bally et al. (2002), which, when corrected for the different assumed distance are, respectively,  $203 \text{ km s}^{-1}$ ,  $155 \text{ km s}^{-1}$ , and  $266 \text{ km s}^{-1}$  at  $320.0^\circ$ ,  $319.9^\circ$ , and  $328.3^\circ$ . The position angles (P.A.’s) from A, B, and G3<sub>j</sub> to VLA 1 in the first epoch were, respectively,  $317.3^\circ$ ,  $318.5^\circ$ ,



**Figure 5.** Composite H $\alpha$  + [S II] image for the 2007.6 UT epoch image of HH 2. North is up and east is to the left. The main knots identified by Bally et al. (2002) are shown, as are the boundaries of subsequent figures of the region.

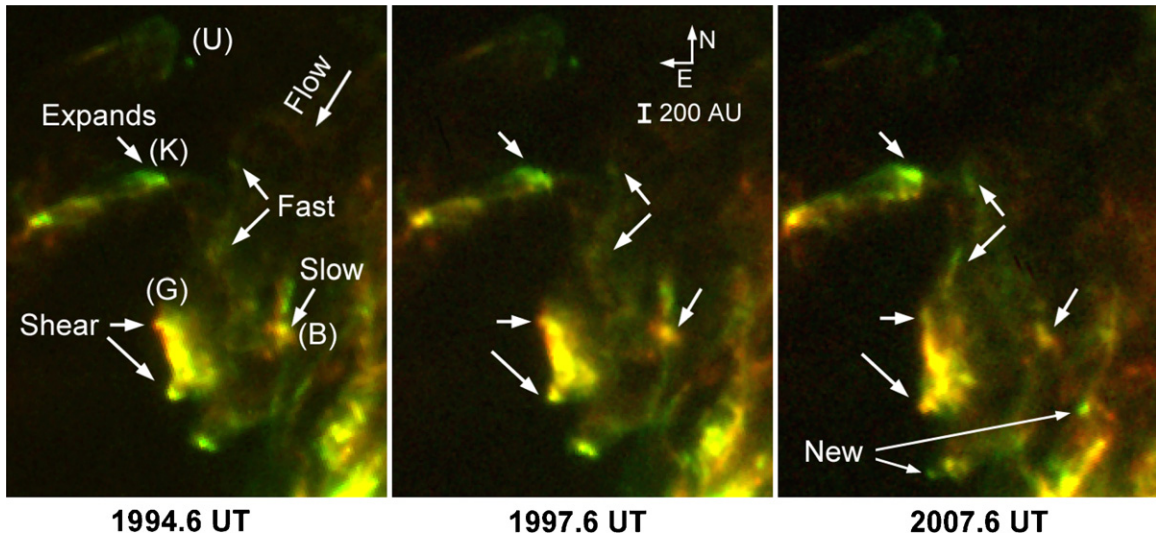
(A color version of this figure is available in the online journal.)

and  $324.9^\circ$ , so the new proper motion vectors for the three knots are aligned even closer with VLA 1 than the old ones were, within  $2^\circ$  ( $\sim 0.25$  arcsec) of the source. Hence, the new data confirm that both the HH 1 and HH 501 jets originate from VLA 1.

### 3.1.4. HH 2

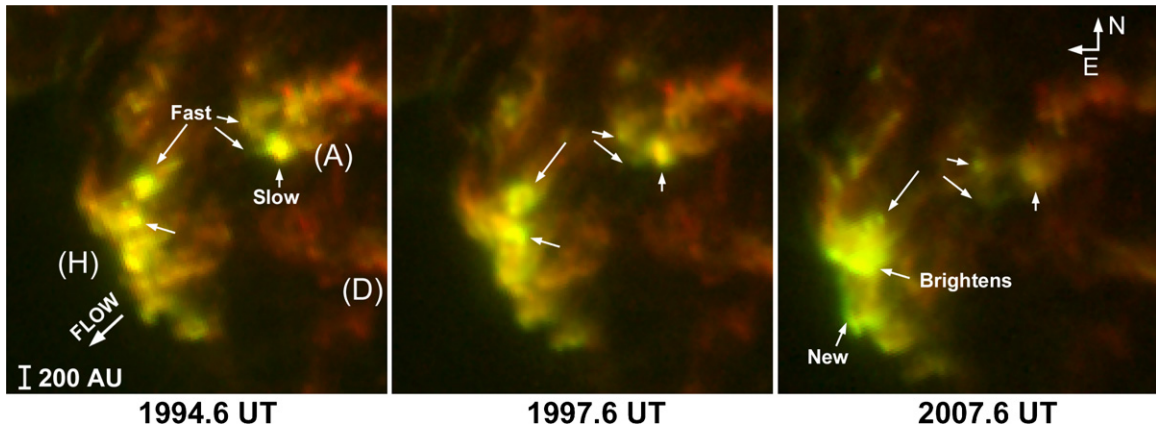
Figure 5 outlines the nomenclature associated with HH 2, and Figures 6 and 7 summarize the morphological changes within the complex. In the northern half of HH 2 (Figure 6), knot K roughly doubled in size between epochs 2 and 3, and is now particularly bright in H $\alpha$ . As noted by Bally et al. (2002), this object has a relatively low proper motion and is a reverse-facing bow shock. The third epoch image indicates it is a dense knot in the process of being entrained by a faster wind, and presents an outstanding opportunity to follow this process in real time. Knot G is a clumpy sheet-like structure that exhibits strong shear, with the southern portion steadily moving ahead of the northern portion. Knot B appears to lag behind the other knots in the region, and is probably located on the near or far side of the cavity that contains the fastest knots. Between knots B and K there is an H $\alpha$ -bright arc with a high velocity that has nearly reached the position of knot G by the third epoch. Figure 6 also marks the location of two new forward-facing bow shocks that appeared along the axis of the fastest parts of the flow in the last epoch.

The southern half of HH 2 is dominated by the brightest knot, H, and the historically most variable one, A (e.g., Herbig & Jones 1981). Figure 7 shows that knot A is actually a composite between a fast component and a slow component, with the brightest region associated with the slower component. This



**Figure 6.** Expansion of a portion of Figure 5, covering the northern portion of HH 2, for the three epochs. The main structural variations in the line emission are marked, and are discussed in the text.

(A color version of this figure is available in the online journal.)



**Figure 7.** Expansion of a portion of Figure 5, covering knots A and H in the southern portion of HH 2. The bright working surface HH 2H to the left of the figures consists of numerous clumps and small bow shocks, while knot A to the right splits into a fast and a slow component. A portion of knot H located where the wings of two small bow shocks intersect has brightened considerably in the third epoch, and may represent a Mach stem (see the text).

(A color version of this figure is available in the online journal.)

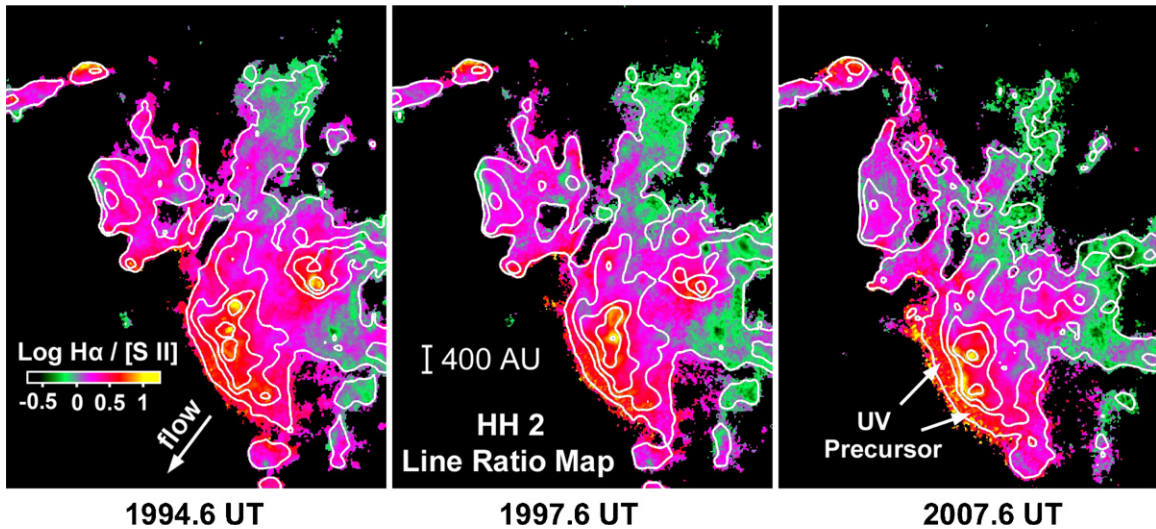
slower knot faded by factors of  $\sim 4$  in  $[S II]$  and  $\sim 15$  in  $H\alpha$  between 1994 and 2007, while becoming more diffuse. Knot H is also in a period of dramatic change as a fast knot (Figure 7) has moved ahead and now appears nearly coincident with the leading edge of the object. A new arc, bright in  $H\alpha$  has appeared in front of the leading edge of knot H. Major photometric changes have also occurred within knot H, most notably a brightening of a region located near the intersection of two bow shock wings that emanate from two of the leading clumps in the flow. This region increased in brightness by a factor of  $\sim 7$  in  $H\alpha$  and a factor of  $\sim 4$  in  $[S II]$  between 1994 and 2007, and this region now has a surface brightness double that of the brightest area within knot H in 1994 in both  $H\alpha$  and  $[S II]$ .

Despite the morphological complexity within HH 2, the  $H\alpha/[S II]$  line ratio map of the region in Figure 8 shows a remarkably uniform gradient in the sense that  $H\alpha$  is strongest near the leading edge of knot H, and gradually declines to the northwest. The contour map displays the total flux in both filters, and there is some correlation in the sense that brighter regions tend to have higher  $H\alpha$ . We discuss evidence for an ultraviolet precursor in Section 4.5.

### 3.2. HH 34

HH 34 was one of the first jet/bow shock systems identified (Reipurth et al. 1986). The system has a prominent jet that emerges to the south of an embedded infrared source (Reipurth et al. 2000a), and along this direction there is a large, bright filamentary bow shock HH 34S (Figure 9). A much fainter jet and bow shock exist on the north side of the flow (Bührke et al. 1988), and deep wide-field images trace a series of faint bow shocks over a length of  $\sim 3$  pc, implying a dynamical time of at least  $10^4$  years (Devine et al. 1997). Ground-based proper motions (e.g., Heathcote & Reipurth 1992) show that knots in the jet emerge about  $30^\circ$  from the plane of the sky with velocities of  $200\text{--}300 \text{ km s}^{-1}$ . *HST* images demonstrate that the jet expands with a full opening angle of just less than a degree, and the ejection direction varies with time, giving the jet a wiggled shape (Reipurth et al. 2002). Other apparently unrelated embedded young stars, including Re 22, exist in the area (see Reipurth et al. 2002 for a complete discussion of these sources).

The jet is strong in  $[S II]$ , indicative of shock velocities  $\sim 30 \text{ km s}^{-1}$  (Hartigan et al. 1994), so the velocity variations



**Figure 8.**  $H\alpha/[S II]$  line ratios within HH 2 (see Figure 5), plotted for all points where the sum of the background-subtracted fluxes in the two filters exceeds 20 ADU. The white contours are for the  $H\alpha + [S II]$  image for each epoch, with the lowest contour equal to 30 ADU, and each higher contour a factor of four larger than the previous one. The line ratios tend to increase toward the leading shock fronts at left. An extended zone of diffuse  $H\alpha$  emission (lowest contour) lies upstream of the brightest knots, most likely arising from the ultraviolet radiation emitted as the postshock gas cools.

(A color version of this figure is available in the online journal.)

that cause the shock fronts are  $\sim 10\%$  of the flow speed. The shock velocity in the bright bow shock HH 34S must be significantly higher,  $\sim 120 \text{ km s}^{-1}$ , to account for the  $[O III]$  emission observed near the apex of the bow, an observation that also enables an estimate of the preshock magnetic field of  $\sim 15 \mu\text{G}$  (Morse et al. 1992). Projecting the jet to HH 34S, there is a confined region of lower excitation (Heathcote & Reipurth 1992), and Fabry–Perot spectra also show the emission-line width there are broader (Morse et al. 1992), implying this region represents the Mach “disk,” where the jet impacts the bow shock.

The second-epoch *HST* images (Reipurth et al. 2002, Table 1) are much deeper than those in the first epoch, and clearly resolved the shock waves in HH 34S and along the jet. The images of HH 34S revealed that the bow shock consists of several filamentary  $H\alpha$  sheets which outline the shock fronts. A reverse-facing bow shock, visible in  $H\alpha$  and followed by a  $[S II]$  cooling zone, marks the location of the Mach disk. The jet is especially bright in  $[S II]$ , but  $H\alpha$  is also visible in the jet, especially along the edges where weak bow-shock-like wings trail behind several knots.

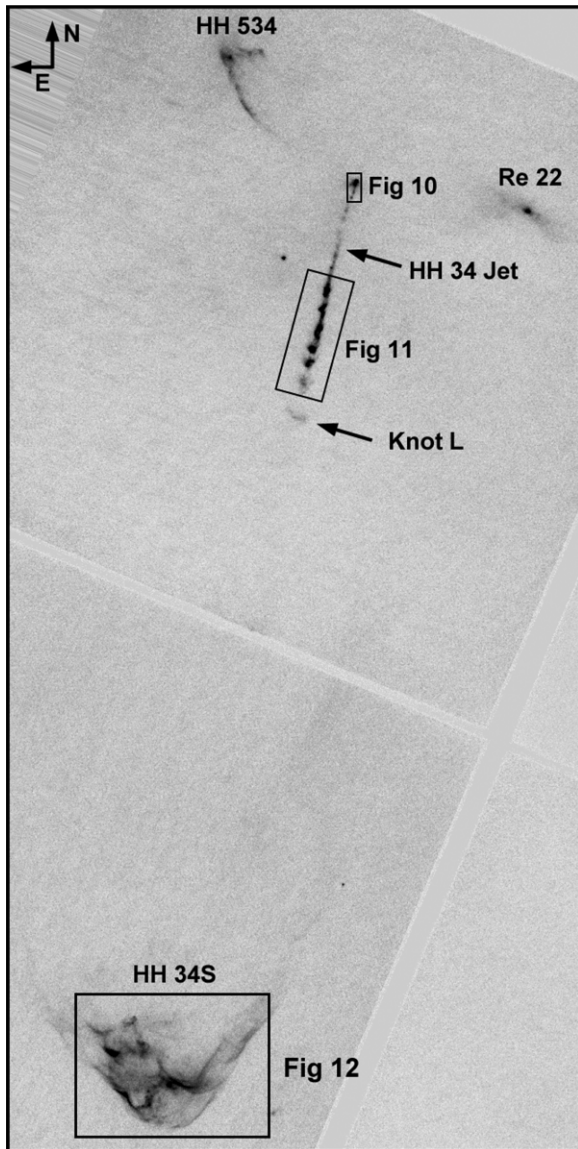
### 3.3. The HH 34 Jet

The source of the HH 34 jet is invisible at optical wavelengths, but it illuminates a reflection nebula at the base of the jet and this nebula is present in all our *HST* images. Figure 10 shows that the reflection nebula retains roughly the same morphology between the three epochs—point-like, surrounded by a faint inverted V-shape typical of opaque flared disks (e.g., Wood et al. 1998). As noted by Reipurth et al. (2002), the nebula is bright in  $H\alpha$ , with the observed  $H\alpha/[S II]$  ratio  $\sim 0.7$ – $1.1$  for the three epochs despite the fact that the bandpass of the  $[S II]$  filter is a factor of 2.1 broader than that of the  $H\alpha$  filter. Spectra of active accretion disks typically have very strong  $H\alpha$  emission, consistent with the observations and with a published spectrum of the source (Reipurth et al. 1986). The reflection nebula was about 50% brighter in the third epoch than it was in the first two epochs, and it will be interesting to see if this presages the emergence of a new knot.

Reipurth et al. (2002) identified several knots close to the source in the 1998.7 UT images, and measured proper motions for them. Our third epoch images extend this work by identifying a new knot, and by measuring proper motions for knot A5, which first appeared in the second epoch. The new knot, labeled A7 in Figure 10, is located  $\sim 175 \text{ AU}$  from the reflection nebula, and, like other knots near this position, has a higher  $H\alpha/[S II]$  ratio compared with knots further downstream. We discuss the excitation and nature of this feature in Section 4.4.

Knot A5 was by far the brightest feature in the jet close to the source in 1998.7, but in the new images it faded by a factor of  $\sim 2$  in  $[S II]$ , and disappeared completely in  $H\alpha$ . Between epochs 2 and 3 the knot changed its morphology from nearly symmetrical to being stretched along the flow direction. The proper motion of knot A5, measured from the  $[S II]$  images in 1998.7 and 2007.8 UT, is  $87 \pm 4 \text{ mas yr}^{-1}$  at P.A.  $167.4 \pm 1.5 \text{ deg}$ , where the uncertainties are derived from defining slightly different boundaries for the knot. An additional systematic uncertainty of  $10 \text{ mas yr}^{-1}$  arises from the morphological changes. If we were to trace knot A5 backward in time it should appear 0.1–0.2 arcsec from the reflection nebula in the first epoch, but there was no trace of the knot at that time. Hence, the knot either decelerated during this period, or initially formed a few tenths of an arcsecond from the source.

Figure 10 shows that knot A4 expanded over the time period while fading by a factor of two in  $[S II]$ . The location of the knot in the three epochs, 0.68, 1.09, and 2.05 arcsec, respectively, from the brightest part of the reflection nebula, implies a proper motion of  $103 \pm 5 \text{ mas yr}^{-1}$  between epochs 1 and 2, and  $105 \pm 5 \text{ mas yr}^{-1}$  between epochs 2 and 3, in reasonable agreement with the value of  $115 \text{ mas yr}^{-1}$  found by Reipurth et al. (2002). These proper motions are  $\sim 20\%$  higher than values for knots in the jet further downstream. The FWHM of the knot in the direction perpendicular to the axis of the jet was 0.26, 0.28, and 0.33 arcsec, respectively, in the three epochs. Allowing for the instrumental FWHM of the coadded stellar images (0.18 arcsec), the true width of knot A4 was 0.19, 0.21, and 0.30 arcsec in the three epochs, implying a full opening angle for this knot over time of  $4.6 \pm 1.0 \text{ deg}$ , considerably larger than the  $0.8 \text{ deg}$



**Figure 9.** Combined  $H\alpha$  +  $[S II]$  image of the HH 34 region taken 2007.8 UT. The principal objects and areas of subsequent figures are marked.

opening angle of the jet measured by following how the sizes of different knots grow with distance from the source. The origin of the differing opening angles most likely arises from

morphological changes in the knot on scales comparable to the spatial resolution of the images. For example, knot A4 appears more diffuse in the third epoch than it does in the first two epochs, where it shows a more point-like core, and this change will increase the measured value of the FWHM of the feature.

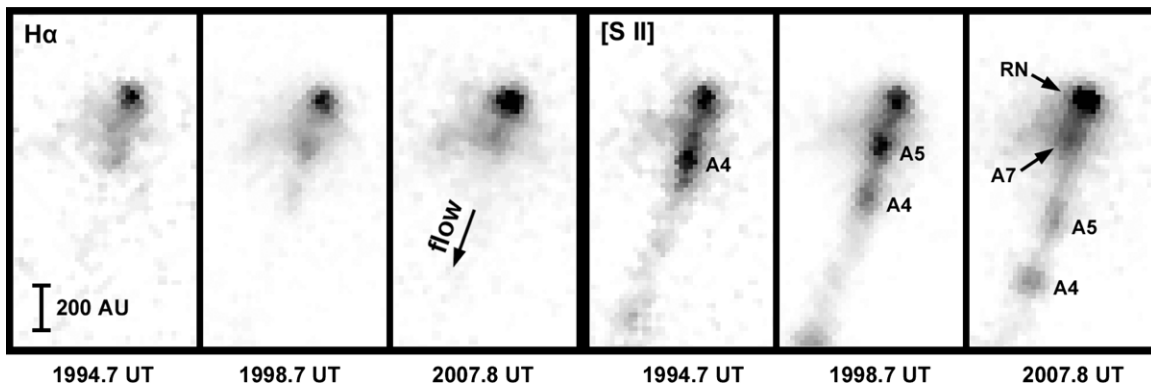
The bright part of the HH 34 jet (Figures 9 and 11) exhibits a rich variety of internal structure. As noted by Reipurth et al. (2002),  $H\alpha$  emission tends to be brighter along the edges of the jet (knots E, F, and G), and near the apices and wings of small bow shocks (knots E, I, and K). Despite the complexity of this region, the third epoch indicates only modest structural variations occur here, with most knots simply translating along the jet. The most notable exception is the eastern side of knot F, where what appeared as a bend in the jet became nearly pinched off from the axis of the flow in the third epoch. This region also became brighter in both filters but especially in  $H\alpha$ . Knots I, J, K, and L all faded significantly in  $[S II]$  in the  $\sim 13$  years between the first epoch and the third epoch (by factors of 1.3, 1.8, 2, and 2, respectively). Surprisingly, both Morse et al. (1993) and Noriega-Crespo et al. (1993) reported  $[O III]$  emission from knot L indicative of a high shock velocity.

### 3.4. The HH 34S Bow Shock

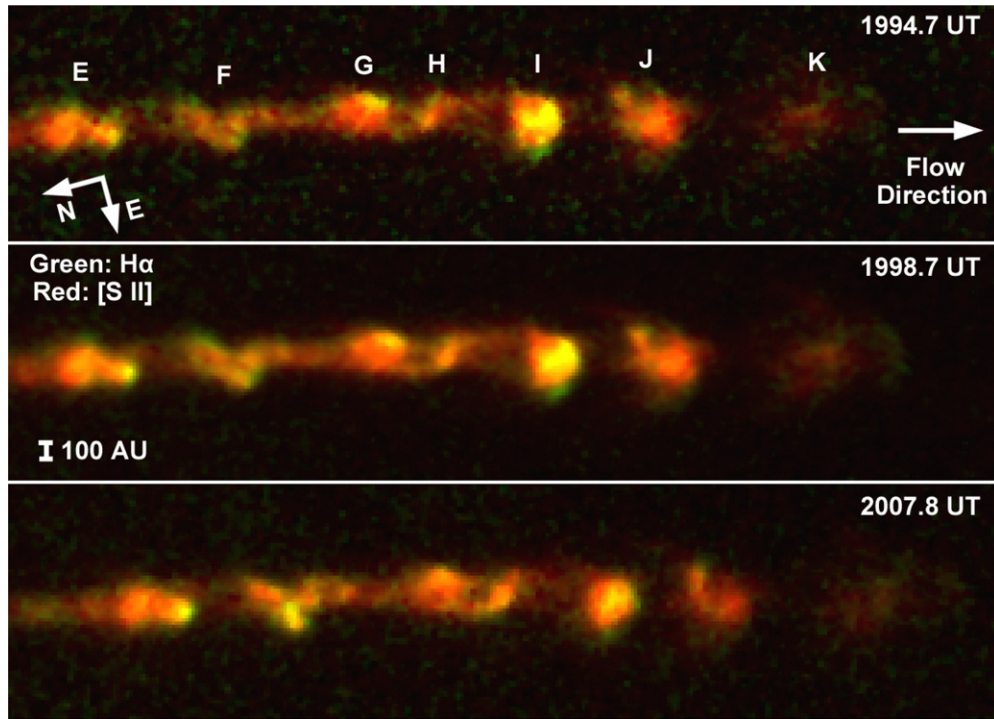
When projected along a straight line, the jet intersects the large bow shock HH 34S at knot  $E_2$ , where a reverse bow shock forms (Figures 9 and 12). This “Mach disk” has strong  $H\alpha$  emission on the side facing the source, followed by a fan-shaped cooling zone  $\sim 1000$  AU in length that emits primarily in  $[S II]$ . Further along the flow direction are knots  $D_1$  and  $D_2$ , which have  $H\alpha$  emission on the side away from the source, as expected for the bow shock. Hence, the middle panel in Figure 12 is essentially a highly resolved working surface, where the  $[S II]$  emission is sandwiched between a forward shock (the bow shock;  $D_1$  and  $D_2$ ) and a reverse shock (the Mach disk;  $E_2$ ).

As noted by Reipurth et al. (2002), the bow shock consists of about a dozen overlapping filamentary sheets. The most dramatic flux variations in the third epoch images of HH 34 occur where these sheets intersect. For example, in the Mach disk region, knot  $D_1$  lies near the intersection point of two  $H\alpha$  arcs (Figure 12). This feature brightened by  $\sim 50\%$  in both  $H\alpha$  and  $[S II]$  between 1998.7 UT and 2007.8 UT. Situated in a complex region with several filaments, the bright knot B essentially disappeared in the third epoch, replaced by several fainter diffuse blobs that appear mainly in  $H\alpha$ .

Knot C is another example of a bright compact feature, which, like knot  $D_1$ , is located immediately behind the intersection



**Figure 10.**  $H\alpha$  (left three panels) and  $[S II]$  (right three panels) images of the source region of the HH 34 jet. The object labeled “RN” is a reflection nebula located near the exciting source. Labeled features are discussed in the text. North is up and east is to the left. The length of the scale bar assumes a distance of 414 pc.



**Figure 11.** Color composite of the brightest portion of the HH 34 jet.  $H\alpha$  is in green,  $[S II]$  in red, and yellow denotes emission in both filters. The flow moves from left to right. The bottom of knot F has become nearly pinched off in the last image. Knots I, J, and K all faded significantly between 1998 and 2007. (A color version of this figure is available in the online journal.)

point of two  $H\alpha$  arcs (Figure 12). Similar compact knots near knot B exhibit peculiar proper motions and are highly time variable. Reipurth et al. (2002) discovered that the  $H\alpha$  arc immediately south of knot B broke into four compact knots, suggestive of a fluid dynamical instability. Surprisingly, Figure 12 shows that these knots did not develop into Rayleigh–Taylor fingers in the third epoch, but instead retained roughly the same morphology despite having nearly three times longer to evolve between the second and third epochs as compared with the first and second epochs. We discuss these transient features and intersecting bow shocks in terms of Mach stems in Section 4.2.

### 3.5. HH 47

The HH 46/47 jet originates from a low-mass binary system at the core of an isolated globule at the periphery of the Gum Nebula (Dopita 1978; Reipurth et al. 2000b). A bright blueshifted jet emerges from the base of a reflection nebula near the source, and the jet exhibits a wiggled structure until it encounters a bright bow shock, HH 47A (Figure 13). *HST* images revealed a clear bow shock/Mach disk structure within HH 47A (Heathcote et al. 1996), and ultraviolet spectra provide evidence for multiple shocks in this object (Hartigan et al. 1999). The redshifted portion of the flow is more obscured, and is visible at optical wavelengths only as a short faint jet near the source (Figure 13), and as a bow shock near the edge of the globule (Dopita et al. 1982; Eisloffel et al. 1994a). The redshifted flow creates a large cavity that is outlined well in mid-IR *Spitzer* images of the region (Noriega-Crespo et al. 2004). Deep wide-field images uncovered additional bow shocks several parsecs from the source (Stanke et al. 1999). Hence, the observed emission knots come from velocity variations where material moves into the wakes of previous ejections.

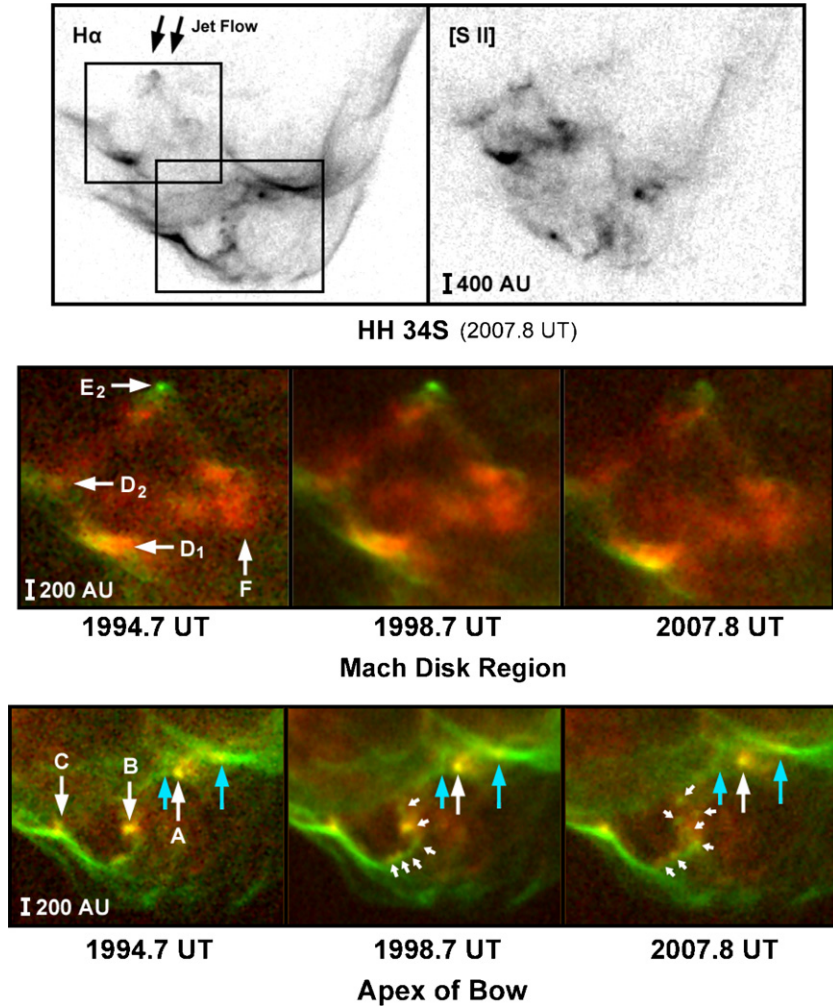
Hartigan et al. (2005) measured precise proper motions in the HH 47 jet based on two epochs of *HST* images, and

found the jet to be inclined 37 deg to the plane of the sky (assuming a distance to the object of 450 pc; Claria 1982). Proper motions near the base of the jet are  $\sim 270 \text{ km s}^{-1}$ , then drop to  $\sim 180 \text{ km s}^{-1}$  further out in the jet, and gradually increase to  $\sim 300 \text{ km s}^{-1}$  in front of bow shock HH 47A. Proper motions within HH 47A are higher at the apex and lower along the wings, averaging  $\sim 200 \text{ km s}^{-1}$ . The jet knots have low-excitation spectra characteristic of shock velocities  $\sim 34 \text{ km s}^{-1}$  (Morse et al. 1994), consistent with the observed dispersion of proper motions within the jet.

The first two *HST* epochs revealed several unexpected dynamical processes which operate within the HH 47 jet and bow shock. Near the base of the flow there is a bright, variable, linear  $H\alpha$  feature that appears stationary. Hartigan et al. (2005) interpreted this feature as a deflection shock that occurs as the wiggling jet impacts the edge of the cavity outlined by the reflection nebula. Many of the knots in the jet have distinct  $H\alpha$ -emitting tails that represent wakes from the knots, and when the knot is displaced from the central axis of the jet the wake occurs primarily on the side nearest to the edge of the cavity. The Mach disk is a variable structure that developed two C-shaped intrusions in the second epoch which could come from small dense clumps in the jet as they penetrate the working surface, and variable filamentary structures also exist within the bow shock. Additional evidence for a clumpy flow comes from a very bright knot within HH 47A that has a proper motion  $\sim 20\%$  larger than that of the rest of the bow shock (Hartigan et al. 2005).

### 3.6. The Jet and Reflection Nebula in HH 47

A color montage of the source region for the three epochs (Figure 14) confirms that the deflection shock is a stationary structure. Unlike the reflection nebula in its vicinity, the deflection shock has no  $[S II]$  component. The reflected light that outlines the flow cavity is strong in  $H\alpha$ , with  $H\alpha/[S II] \sim 1.3$



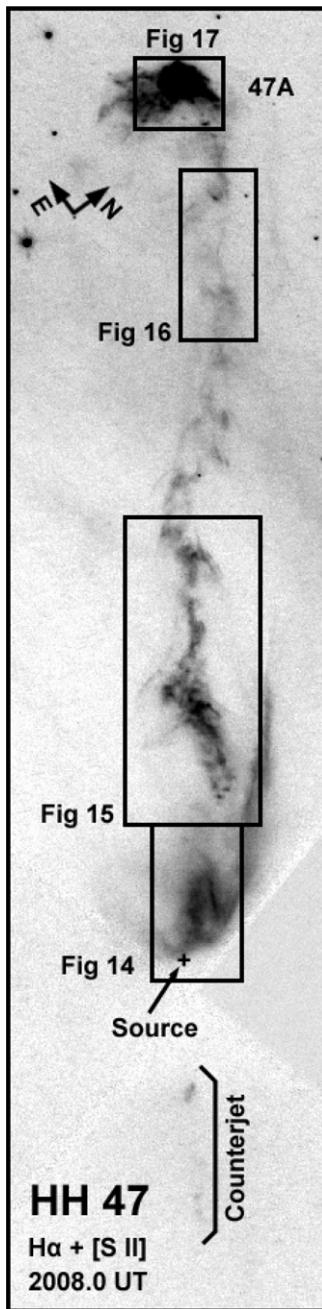
**Figure 12.** Motions within the HH 34S bow shock. Top: third-epoch H $\alpha$  and [S II] images of HH 34S. Arrows mark the projected location where the jet impacts the bow shock. The two boxes are expanded in the middle and bottom panels. Middle: the Mach disk region of HH 34S. Green is H $\alpha$  and red is [S II]. Knot E<sub>2</sub> is the Mach disk. Feature D<sub>1</sub>, located behind the intersection point of two bow shocks, brightened in the third epoch. Bottom: same as middle but for the apex of the bow shock. Knot A, marked with a white arrow, exhibits lateral motion relative to other nearby features such as the two marked with blue arrows. Several transient knots, identified with small arrows, appear near feature B. Knot C lies just behind the intersection of two arc-shaped shocks. North is up and east is to the left in all images. (A color version of this figure is available in the online journal.)

throughout the region. Hence, the source must possess a strong H $\alpha$  emission line in its spectrum. Most parts of the reflection nebula increased in brightness by 10%–20% between the first two epochs, and then faded by about a factor of two in the third epoch.

The HH 46/47 jet contains dozens of distinct knots and arcs, as well as diffuse emission and a reflection nebula, and different papers have adopted distinct naming conventions for these features. In his discovery paper, Schwartz (1977) referred to HH 47A as HH 47, and the reflection nebula as HH 46. This nomenclature was extended by Dopita et al. (1982) to identify HH 47A as the bright blueshifted bow shock, HH 47B as the blueshifted jet, and HH 47C and HH 47D as the more diffuse redshifted and blueshifted bow shocks, respectively, located at larger distances on either side the source. Deeper ground-based emission-line images uncovered much more structure, and Reipurth & Heathcote (1991) identified 26 features in the upper portion of the blueshifted jet and bow shock and 11 in the lower portion of the jet (labeled A<sub>NN</sub> and B<sub>NN</sub>, respectively, where NN is a sequence number), and named two emission knots in the jet near the source HH 46-1 and HH 46-2.

This naming system was modified by Hartigan et al. (2005) to identify specific spatial regions for use in proper motion measurements. The new system denotes objects within the bow shock as A, and in the blueshifted jet as J. The filter is defined by the second letter, either s or h ([S II] or H $\alpha$ , respectively), and a sequence number is appended. For example, feature Jh3 is the third H $\alpha$  feature in the jet identified by Hartigan et al. (2005) for proper motion measurements. While this system is ideal for quantitative measures of proper motion, it has a drawback in that some features appear in only one filter, so the sequence numbers between [S II] and H $\alpha$  do not necessarily coincide. For example, the H $\alpha$  knot Jh9 is located in essentially the same spatial position as the [S II] knot Js12. Despite its limitations, we adopt this naming convention here.

Near the source, the bright jet knot Jh1 expanded from a compact C-shaped morphology in 1994 to a larger less-distinct structure in 2008. Closer to the source, the jet continues to travel to the right of the average jet direction defined by the position of the large bow shock HH 47A (up in Figure 14). The H $\alpha$ /[S II] line ratio along the jet is  $\sim 1.1$ , with a variation of  $\sim 15\%$ .



**Figure 13.** Composite  $H\alpha$  +  $[S II]$  third-epoch image of the HH 47 jet displayed on a logarithmic intensity scale showing the location of the source and the bright bow shock HH 47A. Boundaries of subsequent figures are shown. The P.A. of the jet is 53.34 deg.

The lower section of the HH 47 jet (Figure 15) is a highly structured region that contains hundreds of interconnected knots and wisps, but despite this complexity the three epochs show that most of this structure simply translates along the axis of the flow in unison. The  $H\alpha$  emission is somewhat more filamentary than  $[S II]$ , and tends to lie between the brightest  $[S II]$  knots. The lowest knot in this part of the flow, Jh3, is unusual in that it has the shape and cooling structure of a reverse bow shock. The third epoch image in Figure 15 confirms this idea, as we now observe that the two small knots in the wings of Jh3 have detached from the object as they flowed past it. Time-interpolated movies of this portion of the jet reveal subtle changes along the flow, especially within the Jh4–6 region, where the leftmost (southeast) knot

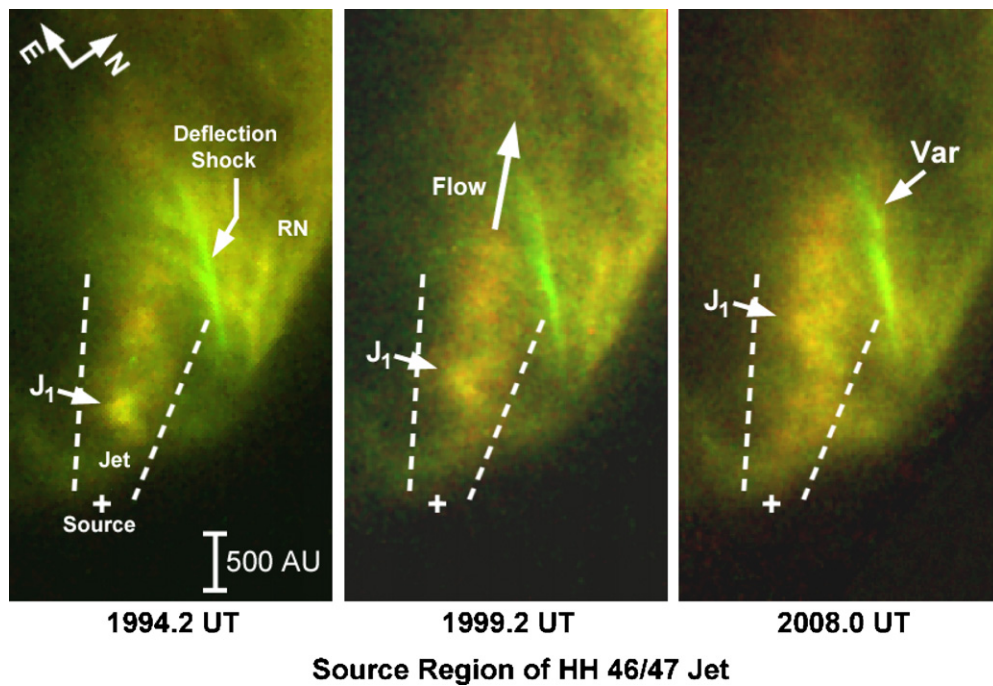
gradually becomes more detached from the rest of the jet to its right. The  $H\alpha/[S II]$  ratio declines from  $\sim 0.35$  in the Jh4–6 region to  $\sim 0.2$  in Js12.

The upper section of the HH 47 jet (Figure 16) is relatively fainter than the lower part, and consists of a series of  $H\alpha$  arcs that lie along the edges of  $[S II]$  knots and filaments (Heathcote et al. 1996; Figure 13). Motions in this section of the jet were relatively uniform between the first and second epochs, and structural variations were minor (Hartigan et al. 2005). The main event in the third epoch is the sudden appearance of a new knot, labeled Jh13 in Figure 16. This knot emits in both  $H\alpha$  and in  $[S II]$ , and has a curved shape in the sense of a reverse bow shock where the apex of the bow faces toward the source. However, the knot is still too small,  $\sim 0.2$  arcsec in 2008, to have a clearly resolved bow shape. Figure 16 also reveals that the  $H\alpha$  filament Jh12 changed from a linear feature to one that appears comma-shaped.

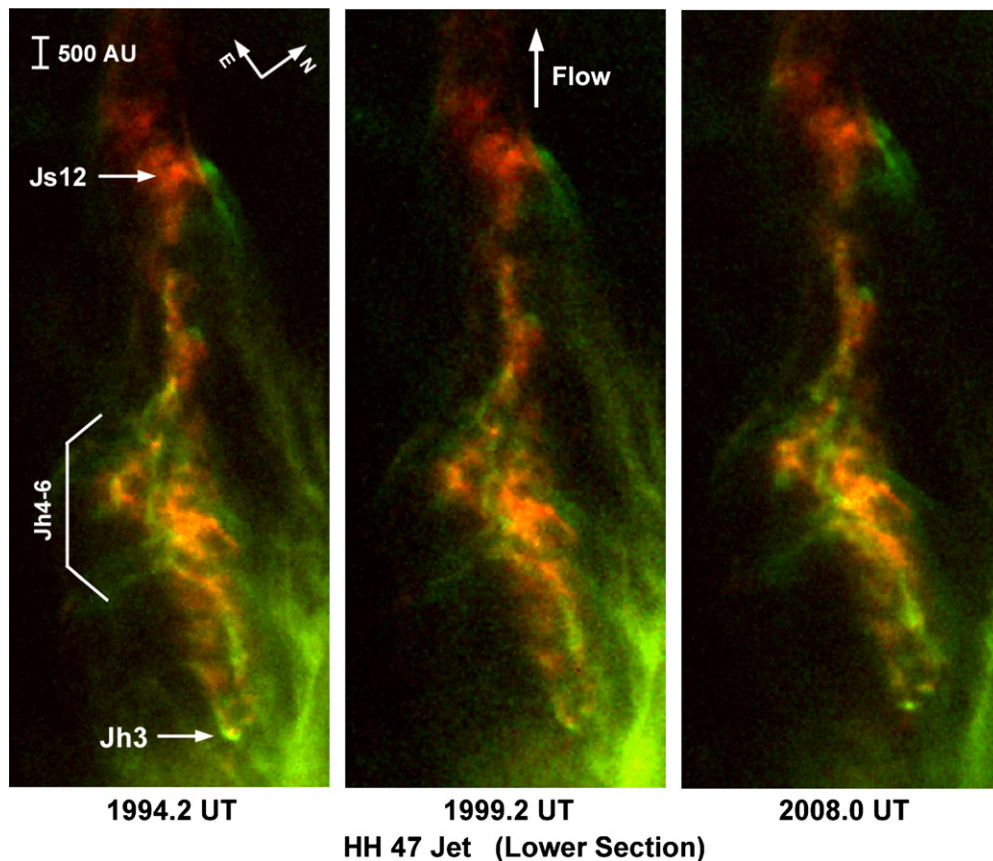
### 3.7. The HH 47A Bow Shock and Mach Disk

The bright bow shock HH 47A marks the end of the continuous blueshifted jet in HH 47 (Figure 13), and displays a classic bow shock/Mach disk structure. The Mach disk is clearly defined as a linear  $H\alpha$  emission feature located at the base of the bow shock (Heathcote et al. 1996; Figure 17). The area between the bow shock and the Mach disk is clumpy and radiates in both  $H\alpha$  and in  $[S II]$ . Hartigan et al. (2005) measured proper motions for 12 knots in  $H\alpha$  and 20 in  $[S II]$  in HH 47A, and found that while the motions were overall consistent with a bow shock structure, there were several anomalies. In the image from the second epoch (1999.2 UT), two small clumps appear to penetrate into the Mach disk, while in the bow shock the compact bright clump Ah8 pushed ahead of the other features in the bow on its way to the front of the bow shock. These observations, combined with the overall bumpy appearance of the bow shock led to the idea that small clumps within the jet propagate into the working surface and generate the clumpy structure present in the bow shock. Complicating this scenario was a region close to the Mach disk where the morphological structure was too variable to follow proper motions.

The third epoch images provide a crucial diagnostic of the dynamics within HH 47A, confirming some of the previous ideas and challenging others. Figure 17 presents the three epochs in  $H\alpha$  and  $[S II]$ . The top panel is a color composite centered on the Mach disk, which, although morphologically variable, is present in all three epochs. For reference, a faint star at the upper right marked with a circle illustrates the bulk motion of the bow shock with respect to the background stars. As noted by Hartigan et al. (2005), the jet knot labeled A1 moves  $\sim 50\%$  faster than the rest of the bow shock and should catch up to the working surface in about 2030. The third epoch confirms this motion. This knot lies to the right of the center of the Mach disk in Figure 17, and is accompanied by a counterclockwise tilt in the shape the HH 47A bow shock. The tilt is in the sense one would expect if the Mach disk were to move to the right in response to the changing impact point of the jet knots. The dynamics of this region will be particularly interesting to follow in the future because the region to the right of the HH 47A Mach disk is a source of shocked  $H_2$  gas, so the medium into which A1 will be moving will have a molecular component (Eisloffel et al. 1994a; Curiel et al. 1995). This molecular hydrogen appears to be moving with the bow shock, as it has a large radial velocity



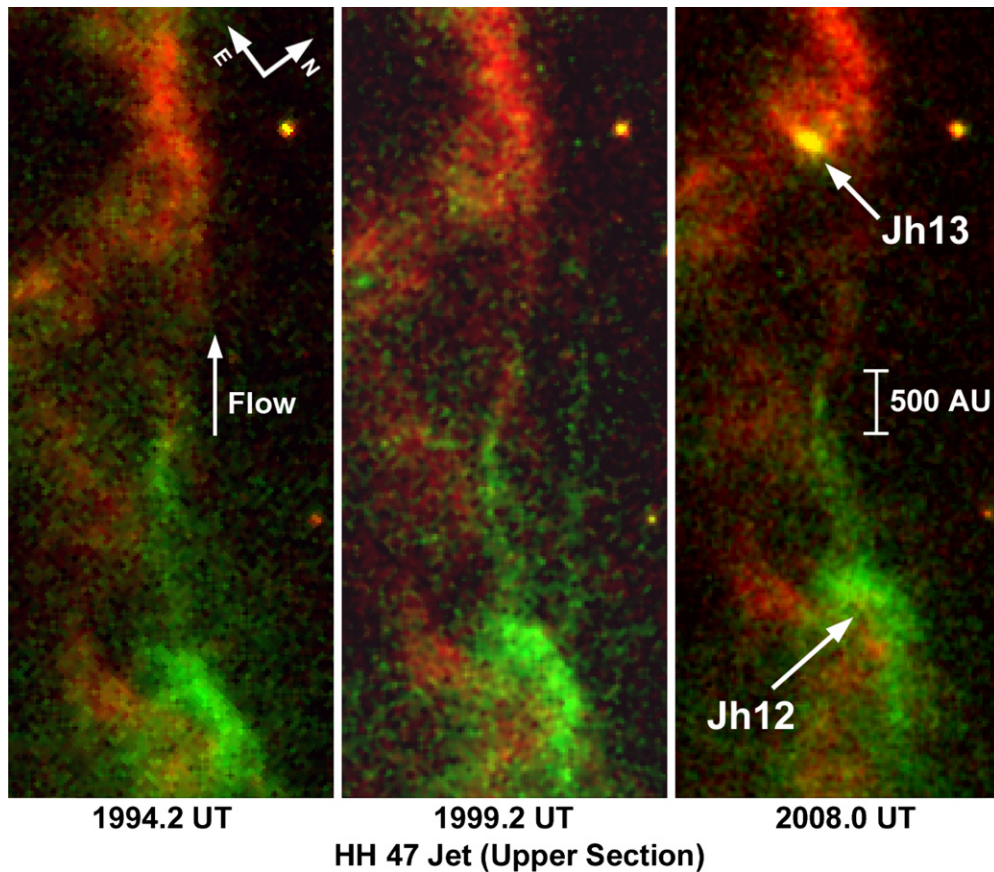
**Figure 14.** Source region of the HH 46/47 jet.  $H\alpha$  is green and  $[S II]$  red. The orientation of the images is the same as the large scale of the jet, P.A. = 54.3 deg. The label RN marks the location of an extended reflection nebula, a “+” shows the position of the infrared source, and dashed lines show the approximate extent of the jet. The deflection shock is stationary over the period, while knot  $J_1$  moves along the jet and develops a sawtooth morphology.  
(A color version of this figure is available in the online journal.)



**Figure 15.** Same as Figure 14 for the lower section of the HH 47 jet. Regions identified in the figure are discussed in the text.  
(A color version of this figure is available in the online journal.)

(Eislöffel et al. 2000; Schwartz & Greene 2003) and a high proper motion (Micono et al. 1998).

Figure 17 shows that the dozen or so knots in the bow shock do not move as one might expect from simple dense bullets. Instead,



**Figure 16.** Same as Figure 14 for a portion of the upper section of the HH 47 jet. A new knot, Jh13, appeared in the third epoch.  
(A color version of this figure is available in the online journal.)

the third epoch reveals a bewildering variety of variations as new features appear while others fade away. For example, the two small knots noted by Hartigan et al. (2005) and marked with small black arrows in the middle panel of Figure 17 penetrate into the Mach disk in the second epoch, but the third epoch shows that these two features do not continue as new bright clumps into the working surface, but instead expand and fade into a mottled background. Likewise, knot Ah8, which appeared to be the best example of a dense knot moving through the working surface with two epochs of data, faded and split into two pieces in the third epoch. Similarly, knot Ah10 at the leading edge of the bow, and knot Ah5 near the Mach disk faded considerably and split in the third epoch. At least three new bright knots have formed in the third epoch, labeled Ah13, Ah14, and Ah15 in Figure 17. The circular feature whose left edge is defined by knot Ah11 also changed its appearance as the area expanded over the course of the observations. We discuss what these variations imply for the dynamics within bow shocks and Mach disks in Sections 4.2 and 4.3.

#### 4. DISCUSSION

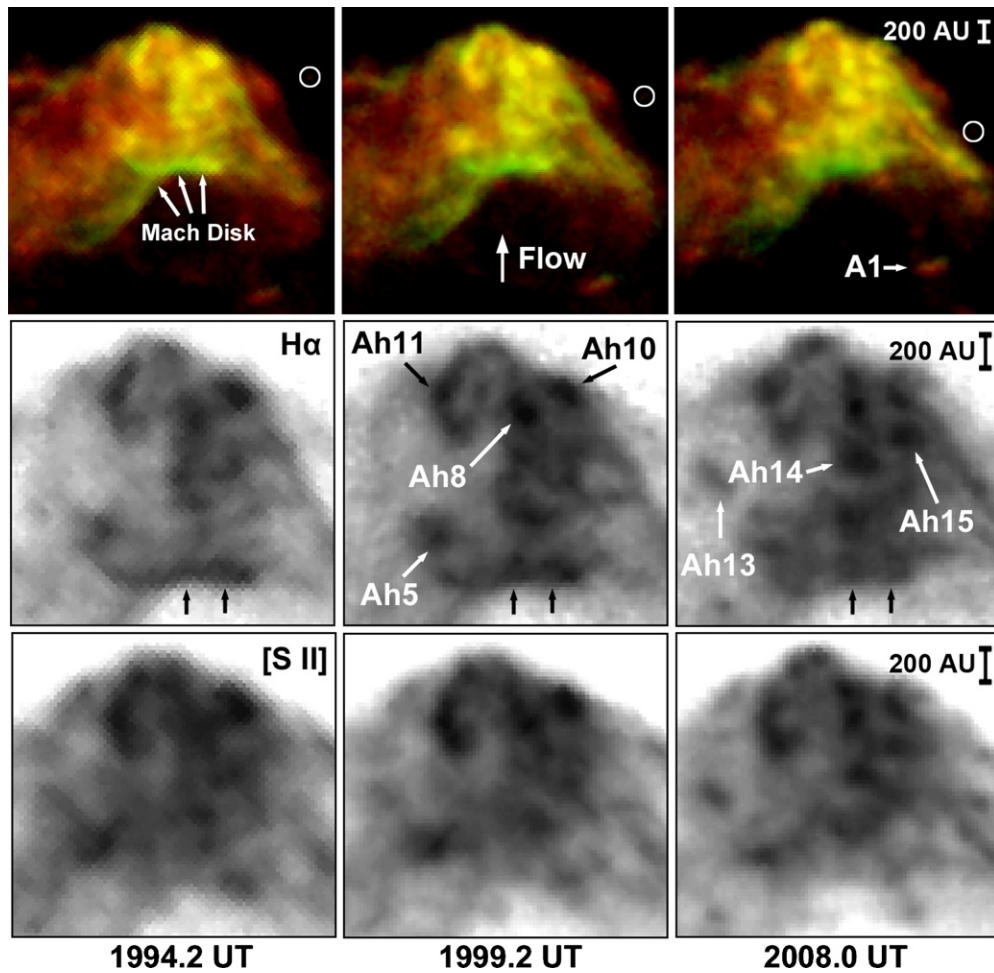
In this section, we group the main dynamical processes evident from the three epochs of HH 1&2, HH 34, and HH 47 images into five broad categories: (1) interactions of jets with cavities and obstacles, (2) structures within bow shocks, (3) structures within Mach disks, (4) knot formation in jets, and (5) radiative shock physics, including precursors, cooling zones and time variability. In each section, we collect evidence from the three regions that illustrate these five dynamical phenomena.

##### 4.1. Deflection Shocks, Cavity Evacuation, and Entrainment

While most of the shock waves in stellar jets arise from velocity variations in the flow, shocks also occur when the jet deflects from an obstacle along its path. The most well-known example of this type of interaction is HH 110, where the jet changes direction and produces a spray of shock-heated gas (Riera et al. 2003; Lopez et al. 2005). New near-IR images of this system show that the jet entrains molecular cloud material as it deflects from the cloud, and recent scaled laboratory experiments have documented how this process evolves with time (Hartigan et al. 2009). By observing such dynamical structures as they change with time we can gain some insight into how jets supply energy and momentum to maintain evacuated cavities.

Several lines of evidence indicate that the brightest bow shock in HH 1 is currently undergoing a glancing collision with a molecular cloud or cavity wall. The shear on the left wing of the bow shock (Figure 2; Section 3.1) implies a stronger interaction occurs there than on the other side of the bow shock, and H<sub>2</sub> images reveal that shocked molecular gas lies along the left-hand side of the bow shock (Davis et al. 2000), similar to the situation in HH 110. In addition, the axis of symmetry of the bow shock points to the right of its proper motion, consistent with a shape distortion brought on by increased drag on the left-hand side (Henney 1996).

Images from the most recent epoch show that the bow shock has flattened dramatically near the apex on the left-hand side, the signature of a new strong deflection shock, and the bubble ahead of the bow shock is another consequence of



**Figure 17.** Bow shock and Mach disk HH 47A. The bow shock travels from the bottom to the top in all panels, which have been registered to align the Mach disk near the center. The circled object is a star. Top: color composite, with H $\alpha$  in green and [S II] in red for the three epochs. Middle and bottom: logarithmic display of H $\alpha$  and [S II] images, respectively, of the central portion of HH 47A. The structure of the bow shock is filamentary and highly time variable. Features with arrows and labels are discussed in the text.

(A color version of this figure is available in the online journal.)

this interaction. The small knots that developed in the wake of the deflection shock along the left bow wing may result from Kelvin–Helmholtz instabilities brought on by the enhanced shear. If this interpretation is correct, the new knots on the left-hand side of HH 1 should grow in size and number as they lag behind the flow to form a structure similar to that observed in the 1994 image (Figure 2). The deflection of the HH 1 bow shock is very oblique, and this type of situation must be a common occurrence as wiggling jets encounter cavity walls.

The dozen or so clumps that make up the feature labeled froth in the HH 1 bow in Figure 2 could simply arise as the bow shock moves through a clumpy preshock medium. In this case, as for nearly all HH flows, the preshock material is slower jet gas. If clumps in the preshock gas move into the bow shock they should create small wakes shaped like reverse bow shocks. Alternatively, if the bow shock were to become “bumpy,” then wakes should trail behind protuberances in the surface of the shock. Clumps in the froth are near the spatial resolution of the images, but a few show reverse bow shapes, supporting the clumpy preshock medium scenario.

Our images of HH 47 (Figure 14) provide clear confirmation of the deflection shock described by Hartigan et al. (2005). In this case the shock appears as a steady-state feature, created as

the jet moves to the right relative to the cavity outlined by the reflection nebula. The bright linear H $\alpha$  emission at the location of the shock is oriented in the right direction to deflect the jet. The current flow direction should continue to bring the jet into contact with the edge of the cavity in the upcoming decades, so the deflection shock in HH 47 should remain bright for the foreseeable future.

Entrainment of material within jets occurs in several of our images as fast material overtakes slower gas. Examples of reverse bow shocks forming around slower material include knots Jh3 and Jh13 in HH 47 (Figures 15 and 16, respectively), HH 2K (Figure 6), and knot E<sub>2</sub> in the HH 34 bow shock (Figure 12). New forward-facing bow shocks also occur when dense knots in the jet sweep up slower material, as pointed out by the central arrow in Figure 2(c) in HH 1, new forward bow shocks in HH 2 (Figures 6 and 7), and the brightening of knot E in HH 34 (Figure 11). Entrainment on smaller scales can result from small changes in the jet’s orientation. The observational signature is the presence of a brighter H $\alpha$  wing on the side of the jet farthest from the main axis of the flow. Examples include knots H<sub>1</sub>, G<sub>1</sub>, G<sub>3</sub>, and G<sub>4</sub> in HH 1 (Figures 3 and 4), knots I, G, and F in HH 34 (Figure 11), and knot Js12 and Jh12 in HH 47 (Figure 15).

#### 4.2. Intersecting Shock Waves, Mach Stems, Clumps, and Sheets

Most emission-line features within our images translate along the direction of motion and exhibit only gradual morphological changes. However, some bright knots located at the intersection points of overlapping filaments within the complex bow shock HH 34S exhibit lateral pattern motion as the intersection point moves. The best example in HH 34S may be the bright knot A (Figure 12), which moves to the right when compared with other features in the bow shock. In this same region bright knots come and go along the curved filament below knot B, which itself has nearly vanished in the third epoch. Knot C in HH 34S is a fine example of a bright knot with a resolved cooling zone at the intersection point of two filamentary shocks.

Studies of intersecting shock fronts date back to the original work of Mach (1878), and a large body of work has been published concerning Mach reflection phenomenon, a field that studies the shock waves which develop as a curved shock moves along a surface (e.g., Ben-Dor 2007). In the case of two intersecting bow shocks, the plane of symmetry of the problem acts as the reflecting surface. Depending upon the specific heat ratio of the gas, bow shocks may develop a flat Mach stem at the intersection point as the angle of incidence between the bow shocks becomes more oblique. Numerical simulations have not yet quantified how cooling affects Mach stem formation in astrophysical shocks, but because cooling effectively lowers the adiabatic index of a flow, and analytical studies show Mach stems form more readily when the adiabatic index is large (De Rosa et al. 1991), radiative cooling should suppress the onset of Mach stems to some degree. Mach stems have now been observed in laboratory experiments of strong shocks in the plasma regime (Foster et al. 2010), and new experiments designed to explore instabilities in radiative blast waves show structures that could be Mach stems (Edens et al. 2010).

Because multiple filaments appear to be common in large HH bow shocks, intersections between filaments are also common. If a Mach stem forms at these locations then the incident gas experiences a normal shock instead of an oblique one, which will lead to higher compressions and temperatures than would occur if the Mach stem were absent. Hence, the main observational consequence of forming a Mach stem will be to create a hot spot with a high proper motion that may also have its own pattern motion as the intersection point varies with time. Even if Mach stems do not form, the intersection points between multiple bow shocks should produce local density enhancements that exhibit pattern motion with respect to the rest of the emission in the bow shock.

Intersecting shocks are the most likely explanation for the pattern motions and transient knots we observe in HH 34S, but the phenomena may also occur in HH 47A, where what appeared to be a bright knot with an unusually large proper motion (knot Ah8 in Figure 17) suddenly faded in the third epoch. Morphological complexities within HH 2 may also arise in part from intersecting shocks. Another explanation for the variable structures within HH 47A is that both  $H\alpha$  and  $[S II]$  are optically thin, so regions within large bow shocks will become brighter and fainter as portions of unrelated shocks become projected along a common line of sight.

Intersecting shock fronts exhibit another behavior in HH 2, where multiple clumps and knots have become organized into a sheet-like structure that resembles a single large bow shock (Figure 7). Over the period of the observations, knot A faded

and knot H at the leading edge of the fast flow now dominates the emission. The excitation map of this region now resembles that of a single large bow shock (Figure 8). A major outstanding question in this region has always been why HH 1 and HH 2 look so different even though they represent opposite sides of the same flow, with HH 1 dominated by emission from a single well-defined bow shock, and HH 2 looking like a clumpy chaotic region. This dichotomy appears to be changing, as the slower clumps in HH 2 fade away and the fast ones merge into a single structure. It may be that we have simply been observing HH 2 at an unusual time in its history during the last few decades when the jet fragmented for some reason, perhaps because it ran into a large obstacle. If HH 2 continues to evolve as it has in the last two decades, it should become dominated by knots G and H, and show entrained features like knot K along the sides (Figure 5). Likewise, HH 1 will be dominated by knots F and E, with entrainment knots located primarily along its northern side.

#### 4.3. Mach Disk Structures

Mach disks are shock fronts that decelerate jets at working surfaces. In three-dimensional numerical simulations the geometry of these structures is typically much more complex than that of a simple disk, and often consists of a mixture of several oblique and normal shocks that may fragment to produce clumpy structures and filaments (e.g., Stone & Norman 1994). Simulations also show that the Mach disk region can be highly variable in time, and that working surfaces may collapse into plugs when the gas cools strongly (Blondin et al. 1990). Observationally, Mach disks should form a sharp  $H\alpha$  feature on the jet side of the working surface as long as neutral material from the jet continues to flow into the working surface.

Our  $H\alpha$  images show two well-resolved Mach disks, in HH 47A and in HH 34S, but these two objects exhibit markedly different morphologies. The Mach disk in HH 47A is a relatively linear feature that extends over the width of the jet (Figure 17), as expected from a simple model. In contrast, what passes as the Mach disk in HH 34S is actually a compact reverse bow shock that forms as the jet flows past a narrow impact point (Figure 12, middle panel). This type of deflection may help explain why multiple arcs occur in HH 34S as opposed to the single bow shock in HH 47A. The large bow shock HH 1 has no clear Mach disk, a situation that could occur if the velocity in the jet declined enough to allow the bow shock to move ahead of the jet in the flow.

The shapes of the Mach disks in HH 47A and HH 34S vary with time, but not significantly more than the rest of the shocked gas does. The most dramatic variation occurred in the HH 47A Mach disk in 1999, when it developed two small irregularities (black arrows in the middle panel of Figure 17) that appeared to be dense jet knots that had begun to penetrate into the working surface. However, in the third epoch these knots faded and expanded, so their nature is uncertain. Dense knots should have produced distinct bow shocks as they moved into the working surface. The third epoch confirms that the fast knot A1 in Figure 17 continues to maintain its integrity as it approaches the working surface. It will be very interesting to observe how the Mach disk changes in response to the impact of this knot in the upcoming decades.

#### 4.4. Formation of New Jet Knots Near Source

The ultimate source of energy for stellar jets is accretion through the circumstellar disks, as evidenced by the observed

correlation between accretion and outflow rates (Hartigan et al. 1995; Cabrit 2007). In a simple model one would expect that episodes of high accretion would result in a jet knot, but this correlation has not been firmly established. It is also possible that energy from disk accretion is stored magnetically and subsequently released as plasmoids in reconnection events. Disk wind models typically become kink unstable beyond a few Alfvén radii and become subject to magnetic flares (Ouyed & Pudritz 1997; Fendt 2009), a behavior also observed in laboratory experiments of magnetized plasma jets (You et al. 2005; Ciardi et al. 2009). One advantage of magnetized plasmoid ejections is they provide a means to remove magnetic flux from jets, which allows jets to be driven magnetically close to the source but still support low velocity shocks at larger distances that would be sub-Alfvénic if not for the reconnection processes (Hartigan et al. 2007, 1994).

Hence, there are essentially two ideas, (1) an accretion-driven scenario where episodic accretion events in the disk immediately eject plasmoids at different velocities that later become jet knots, and (2) a magnetic model where accretion-driven magnetic disk winds load the jet with matter and energy, but magnetic instabilities within the jet create knots with supersonic velocity differences. Although both models predict a correlation between mass accretion and outflow rates, there are observational differences between the two concepts. In an accretion-driven model, knots emerge directly from source, so there should be a one-to-one correspondence between accretion events and observable emission features in the jet. In contrast, knots in a magnetic model originate where reconnection occurs, some distance from the source, so a gap should exist between the source and where the knot first appears. In this case a knot will not necessarily be caused by a particular accretion event, unless that event also leads to a magnetic reconnection.

The ideal test between the two ideas would be to identify new knots as they emerge using a sequence of images taken no more than a few months apart for an object where the jet or jet cavity is visible all the way to the source. A multi-epoch study of the flow from XZ Tau binary by Krist et al. (2008) shows a new  $H\alpha$  shock in 2004 about 2 arcsec (280 AU) south of the stellar pair that was not present in 2002 (typical proper motions for the flow are 0.2 arcsec per year). However, previous epochs show no evidence for a stationary shock at this location, so the best interpretation appears to be that a shock formed here in response to the collision of a faster ejection overtaking a slower one. This system differs from a typical HH jet in that it ejects multiple shell-like bubbles, though denser knots exist along the axis. The faintness of the bubbles relative to the bright point-spread function of the binary pair makes this system a challenging one to study.

With our current data set for the bright HH 34, HH 1, and HH 47 jets we have only three epochs, but these provide some insight into the nature of jet launching. The best object in our sample to study knots as they emerge is HH 34 because there one can trace the jet close to the accretion disk. As described in Section 3.1, new knots also emerged in the HH 1 jet between the different epochs, but these were known before from VLA and infrared observations, and became visible as they moved beyond the obscuring shield of the dense circumstellar disk, and for this reason are less useful for constraining how jets eject knots from their sources.

Figure 10 shows that an  $H\alpha$ -bright knot appears  $\sim 100$  AU from the HH 34 source in all three epochs (knots A4, A5, and A7, respectively). There is no evidence for bubbles or shells

like Krist et al. (2008) found in XZ Tau. With only three images we cannot state with any certainty if these knots emerged from the source, or if they formed close to where we observe them in each epoch. In recent *HST* slitless observations of another jet, HH 30, evidence for heating events  $\sim 50$ – $100$  AU from the source comes from a sudden rise in the ionization fraction at that location (Hartigan & Morse 2007), and it is possible we are observing a similar phenomenon in HH 34. However, a dedicated program of monitoring with adaptive optics or space-based imaging is needed to address this problem thoroughly.

#### 4.5. Cooling Zone and Precursor Structures, Fading and Brightening of Knots

Sharp  $H\alpha$  emission features followed by a more diffuse cooling zone of forbidden line emission are the primary diagnostic of shock waves in stellar jets (Heathcote et al. 1996), and in Section 3 we discussed several examples of resolved cooling zones in our data. Because  $H\alpha$  emission occurs as preshock neutral gas enters the shock,  $H\alpha$  responds immediately to changes in the preshock density; in contrast, intensities of the forbidden lines represent a spatial average over the entire cooling zone. As discussed in Section 4.1, the most variable features in our images are  $H\alpha$  arcs, as expected for shocks that encounter changes in the preshock density. New features typically appear only in  $H\alpha$ , or in both  $H\alpha$  and in [S II], but not in [S II] alone.

In very complex regions that have multiple knots such as HH 2 (Figure 7), or for structured bow shocks like HH 47A (Figure 17), flux variations can arise as differential motions align physically unrelated optically thin filaments along a common line of sight, so to learn about cooling zone timescales we choose to study relatively isolated knots that exhibit secular variations in their forbidden line brightnesses. For example, in HH 34 (Figures 9 and 11), the timescale for knots I, J, K, and L to fade by a factor of two in [S II] is  $\sim 15$  years, and knot B within the HH 34 bow shock (Figure 12) also fades on a timescale of this order. Similarly, in HH 501 (Figures 3 and 4), the decline of the  $H\alpha$ /[S II] ratio in the jet knots is an indication of the time to develop a cooling zone once a shock forms, also about a decade.

As described by Hartigan et al. (1987), the time for a steady state shock wave to cool to  $10^4$  K depends inversely on the preshock density, and ranges between 0.2 to 43 years for shock velocities between 40 and 60 km s $^{-1}$  and preshock densities between 100 and 1000 cm $^{-3}$ . The time dependence of line emission within resolved cooling zones has been recently modeled with two- and three-dimensional simulations by Raga et al. (2009). For comparison with our data we are most interested in predictions of rise and decay times of line fluxes in response to velocity perturbations. Predictions for time-dependent one-dimensional radiative shock models (Hartigan & Raymond 1993; Massaglia et al. 2005) indicate rise and decay times of  $\sim 10$  years, depending on the input parameters, with faster timescales associated with more strongly magnetized flows. The observed cooling times of about a decade agree well with predictions from these models.

When shock velocities become large enough ( $\gtrsim 90$  km s $^{-1}$  for planar shocks; Cox & Raymond 1985), the postshock gas emits enough UV radiation as it cools to ionize incoming hydrogen atoms. This radiative precursor produces a miniature H II region ahead of the shock, and when shock velocities are large ( $\gtrsim 200$  km s $^{-1}$ ; Dopita & Sutherland 1995) emission from the precursor contributes significantly to the observed spectrum. Radiative precursors have also been observed in laboratory

experiments of strong shock waves (Remington et al. 2006; Bouquet et al. 2004). Shock velocities within HH 2H must be  $\sim 160 \text{ km s}^{-1}$  to explain the observed emission-line widths and the high-excitation lines of O III and C IV (Hartigan et al. 1987). Models of the bow shocks in this region that take the ionizing radiation into account improved the agreement with the observed line ratios over previous efforts (Raymond et al. 1988). With a shock velocity  $\sim 160 \text{ km s}^{-1}$  inferred from these models, HH 2H should produce enough radiation for the precursor to ionize preshock gas, but postshock line emission will still dominate the spectrum.

Our images support the notion that radiation affects the strongest shocks within HH 2. Figure 8 shows there is an area of diffuse emission  $\sim 150 \text{ AU}$  wide that follows along the bright leading edge of knot H. This area has a high  $\text{H}\alpha/[\text{S II}]$  line ratio ( $\sim 5\text{--}10$ ) typical of photoionized gas. Dopita & Sutherland (1995) comment that the hard ionizing spectrum from a high-velocity shock produces a large region of partially ionized hydrogen ahead of it, and the preionization at the apex of a bow shock will also be less than that of a planar shock of the same velocity. Both effects tend to help neutral hydrogen survive the journey to the shock front, and any neutral H that does make it to the front will produce strong Balmer emission there, followed by a cooling zone that radiates both forbidden lines and additional Balmer emission. The overall structure we observe in Figure 8 is consistent with this picture. A strong jump in the  $\text{H}\alpha$  flux marks the location of the shock, preceded by a diffuse region of  $\text{H}\alpha$ , and followed by both strong  $[\text{S II}]$  and  $\text{H}\alpha$  emission.

## 5. SUMMARY

In this paper, we have presented high-resolution, multi-epoch *HST* observations of three protostellar jets. Using the epochs as “frames in a movie,” we are able to articulate the evolving plasma dynamics of these systems with a clarity that has not been possible to achieve in previous studies. Our results provide a rich data set which can be mined by those seeking to understand jet systems across the spectrum of astrophysics as well as a those studying astrophysical plasmas in other environments where complex hypersonic flows are present (supernovae, planetary nebula, luminous blue variables, and AGNs).

Before we summarize our specific results for young stars, it is useful to consider the broader astrophysical context of time-dependent imagery as a tool for understanding how plasmas behave. The ability to accurately model environments as diverse as cosmological galaxy formation and space weather in the form of coronal mass ejections interacting with the Earth’s magnetosphere all rely on understanding the complex, time-dependent evolution of plasma dynamical systems. Because the governing equations for these systems are multi-dimensional, coupled, nonlinear partial differential equations, theoretical exploration via analytic methods can only account for the simplest cases. Even when numerical simulations are brought to bear, the inherent multi-dimensionality of the problems of interest, particularly when magnetic fields are involved, often makes it impossible for the simulations to resolve all the important features of the flows. This limitation can be particularly vexing when the flows are inherently multi-scale, as is the case for isotropic turbulence and for inherent heterogeneity (clumpiness).

Additional complications arise when the problem involves “multi-physics,” i.e., a number of physical processes at work simultaneously such as self-gravity or strong cooling by opti-

cally thin radiative line emission. In these cases, a range of time and length scales exist for the problem which must each be resolved computationally. This can, for example, occur in cooling flows in which one has a hydrodynamic timescale  $t_h \sim L/c$  ( $L$  is the size of interest and  $c$  is the sound speed), a cooling timescale  $t_c \sim e/\dot{e}$  ( $e$  is the thermal energy and  $\dot{e}$  is the cooling rate), and  $t_c \ll t_h$ . In addition, initial and boundary conditions can have a strong effect on the simulations. If these conditions are not known from observations or if the simulation must be constrained in the choice of these conditions for computational expediency, the veracity of the results relative to the actual astrophysical system will be comprised to greater or lesser degrees. Thus, the simulation studies alone can not be expected to fully articulate the possible behaviors of astrophysical plasma systems.

However, direct observation of dynamical plasma astrophysical systems provide only limited insights into the evolution of the systems because evolutionary timescales are usually longer than can be observed, or the spatial resolution of the telescope does not allow relevant flow features to be clearly identified and tracked. Thus, observers must usually be content with inferring the global properties of the flow by using snapshots of, for instance, a gravitationally collapsing cloud from Doppler-shift measurements. In cases where proper motions can be resolved, the timescale between observations is usually only long enough to reveal the first derivative of the motion. But if a true dynamical account of the evolution is the goal, then it is the acceleration and structural changes that matter, as these are linked directly to the forces that drive the flows. In addition, observations that measure only proper motions cannot address important issues such as quantifying the different unstable modes and following those that evolve in a nonlinear manner. Hence, while proper motion measurements combined with radial velocities define bulk velocities well within a system, they give effectively no insight into how flows evolve.

The advent of high-spatial-resolution observing platforms like the *HST* has, in some cases, allowed for a more robust observational account of astrophysical plasma dynamics. For systems that are large enough, close enough, and evolve on relatively short timescales, telescopes like the *HST* where the spatial resolution is  $\lesssim 0.1$  in the optical (where the key line diagnostics lie) can provide multi-epoch observations of objects which, when strung together, form movies of the evolving plasma. This technique has been applied to the Crab Nebula (Hester et al. 2002), and a handful of jets from young stars (e.g., HH 30; XZ Tau Hartigan & Morse 2007; Coffey et al. 2004). In this paper, we have greatly extended this methodology by using new third-epoch observations to provide a detailed analysis of the radiative hydrodynamic (and possibly magnetohydrodynamic) behavior of three well-resolved, representative HH jets.

Five major classes of behavior are implied by the time-series data.

### 1. Deflection shocks, cavity evacuation, and entrainment.

Our analysis of the time sequence of images in different emission lines shows significant shear motions and shocks in regions where jets interact directly with their surrounding clouds. In HH 1, shear occurs at the head of the jet where the beam appears to graze the edge of the ambient cloud. The bow shock flattens in this interaction region as the head of the jet deflects and pulls away from the impact point. New knots that formed in the wake of the deflection shock may represent material in the process of being entrained by the flow. In HH 47, a quasi-stationary “deflection shock”

exists near the base of the flow where the jet collides obliquely with the edge of an evacuated cavity. This type of interaction must be common in stellar jets, where ejection angle variations within a given jet of several degrees are the norm. Additional evidence for prompt entrainment in all three regions comes in the form of reverse bow shocks that suddenly “light up” as slower material is overtaken by faster jet gas. Knots in the HH 34 jet exhibit spur shocks that accelerate material at the edge of the jet beam, and excitation maps in the HH 1 jet reveal a similar behavior.

2. *Intersecting shock waves, Mach stems, clumps, and sheets.* In a number of cases we observe complex shock patterns as they evolve in the flow, though when interpreting these changes we must keep in mind that the emission is optically thin, so that line-of-sight effects come into play. In HH 2, bow shocks “drape” over each of the multiple fast moving clumps, and the clumps appear to be in the process of merging into a larger sheet that may form a new, large bow shock. The large bow shocks of HH 1, HH 34, and HH 47 contain intricate networks of fine structure in the form of knots and filaments. The multiple sheets in the HH 34 bow shock are particularly intriguing, as bright areas with distinct cooling zones form where the sheets intersect. These knots exhibit anomalous “pattern” motions as the intersection points move, and could be the first astrophysical example of Mach stems. In the HH 47 bow shock, what initially seemed to be a collection of dense bullets now seems to be a network of overlapping shocks that come and go in a manner that resembles turbulence, and similar morphologies are present in the HH 1 bow shock.
3. *Mach disk structures.* Our *HST* images show two well-resolved Mach disks, in HH 47A and in HH 34S, but these two objects exhibit markedly different, and highly variable morphologies. The Mach disk in HH 47A generally appears close to the standard picture of a planar shock embedded within a bow shock, while the Mach “disk” in HH 34S is more like the point of a reverse bow shock. In three-dimensional numerical simulations, the geometry of the working surface often consists of a mixture of several oblique and normal shocks that may fragment to produce clumpy structures and filaments. Simulations also show that the Mach disk region can be highly variable in time, and that working surfaces may collapse into plugs when the gas cools strongly. Our work validates and challenges both these kinds of studies by providing new modes of behavior which must now be addressed with simulations.
4. *Formation of new jet knots near source.* The images show that the inherent clumpy nature of the jet begins near the jet source, and each jet continues to eject new knots. We can trace the knots closest to the source in HH 34, and each of the three epochs has a strong knot located at about 100 AU from the source. If this knot is indeed quasi-stationary (like the “sprite” in the Crab nebula), it would support the idea that jets generate plasmoids by magnetic reconnection processes. Further study with improved time coverage is the only way to address this issue.
5. *Emission and cooling dynamics.* In all the items above we are able to track the emission structure in  $H\alpha$  and  $[S II]$  of the complex jet flows in considerable detail, both spatially and temporally. We have found several examples of knots that fade when material is no longer fed into the shocks. The timescale for fading is about a decade, consistent with models of cooling zones behind radiative shocks. We also

observe new shocks as they form. These knots immediately create strong  $H\alpha$  as neutral material enters the shock, and then later develop cooling zones of  $[S II]$  emission. An extended region of ionized gas ahead of the strongest shocks in HH 2 appears to be the first clear example of a radiative precursor in stellar jets.

Taken together, our results paint a picture of jets as remarkably heterogeneous structures that undergo highly structured interactions between material within the outflow and between the jet and the ambient gas. This contrasts with the bulk of existing simulations which depict jets as smooth plasma systems. Recent simulation studies have begun probing how jets evolve as inherently clumpy systems, i.e., as “hypersonic buckshot” (e.g., Yirak et al. 2008, 2009, 2010), but our results show that much more work needs to be done in this domain. The structure of jets is a question of fundamental importance because it speaks directly to processes occurring close to the star–disk system where the jet is launched, and considerable uncertainty remains as to how this process operates. Thus, understanding when jet heterogeneity, visible in observations such as the ones we present in this paper, is first imposed (at launch or via instabilities above the launch region) is a question our results can address when combined with simulations. Beyond quite generic issues of jet launching (given the ubiquity of jets in astrophysics) our results bear on equally ubiquitous issues of shock–clump interactions, radiative cooling zones, radiative precursors, and shock–shock interactions in the form of Mach stems created at shock intersection surfaces. These are issues which can be expected to arise in any heterogeneous environment with imposed hypersonic flows. Supernovae, supernova remnants, molecular cloud dynamics, luminous blue variables, planetary nebulae, and the environments associated with both the broad and narrow line regions of AGNs all fall into this category.

Thus, the results provided in this work contain information that can, and should be, used to constrain not only simulations of jet behavior but also more general studies of astrophysical plasma dynamics associated with shocked heterogeneous flows. The challenge for modelers will be to separate out the “climate” from the “weather.” The goal must be to articulate general principles that can be learned through this data set rather than simply attempting to provide a match to an arbitrary set of initial conditions.

We note in closing that High Energy Density Laboratory Astrophysics (HEDLA) experiments are extremely relevant to the questions our study raises. Recent experiments that track the evolution of multiple clumps with a global shock whose radius is much larger than the radius of the clumps reveal morphologies with intriguing similarities to what is seen in our observations (Douglas et al. 2008). In particular, the development of merged “draping” bow shocks and Mach stems appear to form in the experiments with patterns that indicate similar processes as the astrophysical environments. Future work will focus specifically on applying the results of these experiments to the behaviors seen in the clumpy flows presented in the current work.

We thank the STScI TAC for granting observing time for this project, and Jay Anderson for providing his distortion-correction codes. The comments of an anonymous referee helped to improve the clarity and flow of the paper. This work is based on observations with the NASA/ESA *Hubble Space Telescope* obtained at the Space Telescope Science Institute, which is operated by the Association of Universities for Research in Astronomy, Incorporated, under NASA contract

NAS5-26555. Support was provided by NASA through a grant from the Space Telescope Science Institute, which is operated by the Association of Universities for Research in Astronomy, Incorporated, under NASA contract NAS5-26555, and by DOE through the NNSA-sponsored NLUF program for University research.

## REFERENCES

- Anderson, J., & King, I. 2003, *PASP*, **115**, 113
- Balick, B., Alexander, J., Hajian, A., Terzian, Y., Perinotto, M., & Patriarchi, P. 1998, *AJ*, **116**, 360
- Bally, J., Heathcote, S., Reipurth, B., Morse, J., Hartigan, P., & Schwartz, R. 2002, *AJ*, **123**, 2627
- Ben-Dor, G. 2007, *Shock Wave Reflection Phenomena* (Berlin: Springer)
- Blondin, J., Fryxell, B., & Königl, A. 1990, *ApJ*, **360**, 370
- Bouquet, S., et al. 2004, *Phys. Rev. Lett.*, **92**, 225001
- Bührke, T., Mundt, R., & Ray, T. 1988, *A&A*, **200**, 99
- Cabrit, S. 2007, in *IAU Symp. 243, Star-Disk Interaction in Young Stars*, ed. J. Bouvier & I. Appenzeller (Cambridge: Cambridge Univ. Press), 203
- Chini, R., Ward-Thompson, D., Kirk, J., Nielbock, M., Reipurth, B., & Sievers, A. 2001, *A&A*, **369**, 155
- Ciardi, A., et al. 2009, *ApJ*, **691**, L147
- Claria, J. 1982, *A&AS*, **47**, 323
- Coffey, D., Downes, T., & Ray, T. 2004, *A&A*, **419**, 593
- Cox, D. P., & Raymond, J. 1985, *ApJ*, **298**, 651
- Cudworth, K., & Herbig, G. 1979, *AJ*, **84**, 548
- Curiel, S., Raymond, J., Wolfire, M., Hartigan, P., Morse, J., Schwartz, R., & Nisenson, P. 1995, *ApJ*, **453**, 322
- Davis, C., Smith, M., & Eislöffel, J. 2000, *MNRAS*, **318**, 747
- De Rosa, M., et al. 1991, *Phys. Lett. A*, **156**, 89
- Devine, D., Bally, J., Reipurth, B., & Heathcote, S. 1997, *AJ*, **114**, 2095
- Dopita, M. 1978, *ApJS*, **37**, 117
- Dopita, M. A., Schwartz, R. D., & Evans, I. 1982, *ApJ*, **263**, L73
- Dopita, M., & Sutherland, R. 1995, *ApJ*, **455**, 468
- Douglas, M., Wilde, B., Blue, B., Frank, A., Foster, J., Rosen, P., Williams, R., & Hartigan, P. 2008, 50th Annual Meeting of the Division of Plasma Phys., American Physical Society, *Abstract No. PP6.110*
- Edens, A. D., Adams, R. G., Rambo, P., Ruggles, L., Smith, I. C., Porter, J. L., & Ditmore, T. 2010, *Phys. Plasmas*, **17**, 112104
- Eislöffel, J., Davis, C. J., Ray, T. P., & Mundt, R. 1994a, *ApJ*, **422**, L91
- Eislöffel, J., Mundt, R., & Böhm, K.-H. 1994b, *AJ*, **108**, 1042
- Eislöffel, J., Smith, M., & Davis, C. 2000, *A&A*, **359**, 1147
- Fendt, C. 2009, *ApJ*, **692**, 346
- Foster, J. M., Rosen, P., Wilde, B. H., Hartigan, P., & Perry, T. 2010, *Phys. Plasmas*, **17**, 112704
- García Lopez, R., Nisini, B., Giannini, T., Eislöffel, J., Bacciotti, F., & Podio, L. 2008, *A&A*, **487**, 1019
- Hartigan, P., Edwards, S., & Ghandour, L. 1995, *ApJ*, **452**, 736
- Hartigan, P., Frank, A., Varniere, P., & Blackman, E. 2007, *ApJ*, **661**, 910
- Hartigan, P., Heathcote, S., Morse, J., Reipurth, B., & Bally, J. 2005, *AJ*, **130**, 2197
- Hartigan, P., & Morse, J. 2007, *ApJ*, **660**, 426
- Hartigan, P., Morse, J., & Raymond, J. 1994, *ApJ*, **436**, 125
- Hartigan, P., Morse, J., Reipurth, B., Heathcote, S., & Bally, J. 2001, *ApJ*, **559**, L157
- Hartigan, P., Morse, J., Tumlinson, J., Raymond, J., & Heathcote, S. 1999, *ApJ*, **512**, 901
- Hartigan, P., & Raymond, J. 1993, *ApJ*, **409**, 705
- Hartigan, P., Raymond, J., & Hartmann, L. 1987, *ApJ*, **316**, 323
- Hartigan, P., et al. 2009, *ApJ*, **705**, 1073
- Hartmann, L., & Raymond, J. 1984, *ApJ*, **276**, 560
- Heathcote, S., Morse, J., Hartigan, P., Reipurth, B., Schwartz, R. D., Bally, J., & Stone, J. 1996, *AJ*, **112**, 1141
- Heathcote, S., & Reipurth, B. 1992, *AJ*, **104**, 2193
- Henney, W. J. 1996, *RevMexAA*, **32**, 3
- Herbig, G. H., & Jones, B. F. 1981, *AJ*, **86**, 1232
- Hester, J., Stapelfeldt, K., & Scowen, P. 1998, *AJ*, **116**, 372
- Hester, J., et al. 2002, *ApJ*, **577**, L49
- Krist, J., Stapelfeldt, K., Hester, J., Healy, K., Dwyer, S., & Gardner, C. 2008, *AJ*, **136**, 1980
- Lopez, R., Estalella, R., Raga, A., Reira, A., Reipurth, B., & Heathcote, S. 2005, *A&A*, **432**, 567
- Mach, E. 1878, *Sitzungsbr. Akad. Wiss. Wien*, **78**, 819
- Massaglia, S., Mignone, A., & Bodo, G. 2005, *A&A*, **442**, 549
- Menten, K., Reid, M., Forbrich, J., & Brunthaler, A. 2007, *A&A*, **474**, 515
- Micono, M., Davis, C., Ray, T., Eislöffel, J., & Shetrone, M. 1998, *ApJ*, **494**, L227
- Morse, J., Hartigan, P., Cecil, G., Raymond, J., & Heathcote, S. 1992, *ApJ*, **399**, 231
- Morse, J., Hartigan, P., Heathcote, S., Raymond, J., & Cecil, G. 1994, *ApJ*, **425**, 738
- Morse, J., Heathcote, S., Cecil, G., Hartigan, P., & Raymond, J. 1993, *ApJ*, **410**, 764
- Noriega-Crespo, A., Garnavich, P., & Raga, A. 1993, *AJ*, **106**, 1133
- Noriega-Crespo, A., et al. 2004, *ApJS*, **154**, 352
- O'Dell, C. R. 2009, *PASP*, **121**, 428
- O'Dell, C. R., & Doi, T. 1999, *PASP*, **111**, 1316
- Ouyed, R., & Pudritz, R. 1997, *ApJ*, **484**, 794
- Pravdo, S. H., Rodriguez, L. F., Curiel, S., Canto, J., Torrelles, J. M., Becker, R. H., & Sellgren, K. 1985, *ApJ*, **293**, L35
- Raga, A., et al. 2009, *RevMexAA Conf. Ser.*, **36**, 186
- Raymond, J., Hartigan, P., & Hartmann, L. 1988, *ApJ*, **326**, 323
- Reipurth, B., & Bally, J. 2001, *ARA&A*, **39**, 403
- Reipurth, B., Bally, J., Graham, J., Lane, A., & Zealey, W. 1986, *A&A*, **164**, 51
- Reipurth, B., & Heathcote, S. 1991, *ARA&A*, **246**, 511
- Reipurth, B., Heathcote, S., Morse, J., Hartigan, P., & Bally, J. 2002, *AJ*, **123**, 362
- Reipurth, B., Heathcote, S., Roth, M., Noriega-Crespo, A., & Raga, A. C. 1993, *ApJ*, **408**, L49
- Reipurth, B., Heathcote, S., Yu, K. C., Bally, J., & Rodriguez, L. F. 2000a, *ApJ*, **534**, 317
- Reipurth, B., Yu, K. C., Heathcote, S., Bally, J., & Rodriguez, L. F. 2000b, *AJ*, **120**, 1449
- Remington, B., Drake, R. P., & Ryutov, D. 2006, *Rev. Mod. Phys.*, **78**, 755
- Riera, A., Raga, A., Reipurth, B., Amram, P., Boulesteix, J., Canto, J., & Toledano, O. 2003, *AJ*, **126**, 327
- Rodriguez, L. F., Delgado-Arellano, V., Gomez, Y., Reipurth, B., Torrelles, J., Noriega-Crespo, A., Raga, A., & Canto, J. 2000, *AJ*, **119**, 882
- Schmidt, G. 1997, in *ASP Conf. Ser. 121, Accretion Phenomena and Related Outflows*, ed. D. T. Wickramasinghe, G. V. Bicknell, & L. Ferrario (IAU Colloq. 163; San Francisco, CA: ASP), 152
- Schwartz, R. 1977, *ApJ*, **212**, L25
- Schwartz, R., & Greene, T. 2003, *AJ*, **126**, 339
- Stanke, T., McCaughrean, M. J., & Zinnecker, H. 1999, *A&A*, **350**, L43
- Stirling, A., Spencer, R., de la Force, C., Garrett, M., Fender, R., & Ogle, R. 2001, *MNRAS*, **327**, 1273
- Stone, J., & Norman, M. 1994, *ApJ*, **420**, 237
- van Dokkum, P. G. 2001, *PASP*, **113**, 1420
- Wood, K., Kenyon, S., Whitney, B., & Turnbull, M. 1998, *ApJ*, **497**, 404
- Yirak, K., Frank, A., & Cunningham, A. 2010, *ApJ*, **722**, 412
- Yirak, K., Frank, A., Cunningham, A., & Mitran, S. 2008, *ApJ*, **672**, 996
- Yirak, K., Frank, A., Cunningham, A., & Mitran, S. 2009, *ApJ*, **695**, 999
- You, S., Yun, G., & Bellan, P. 2005, *Phys. Rev. Lett.*, **95**, 045002